



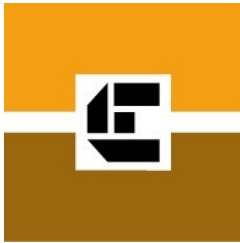
Dallas County Community College District

2004 Bond Program

July 10, 2007



2004 Bond Program



Eastfield College

Site Plan

Eastfield College

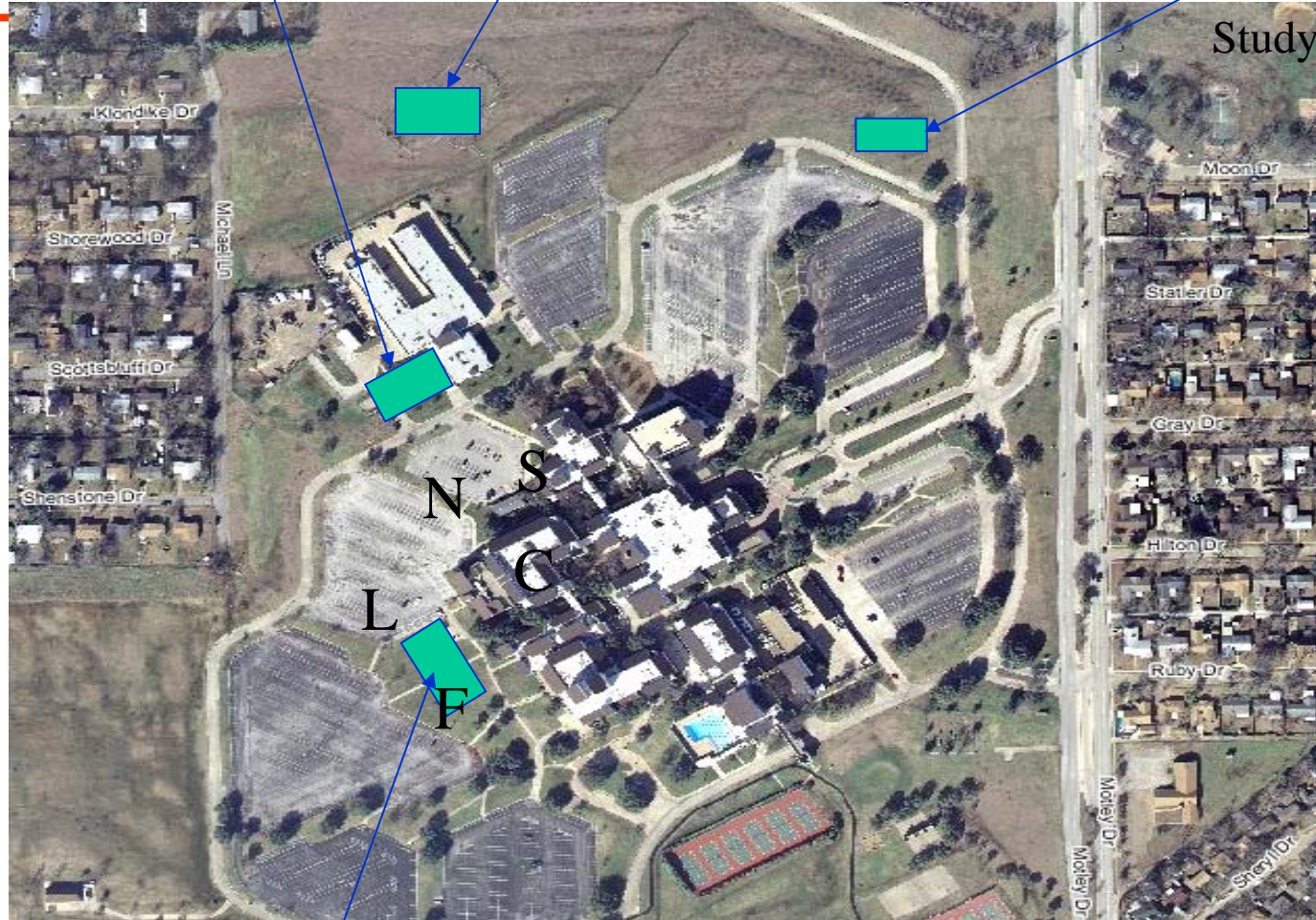
Learning Center Building



Industrial
Technology

Workforce
Development

Parent Child
Study Center



General
Classroom



Learning Center Building

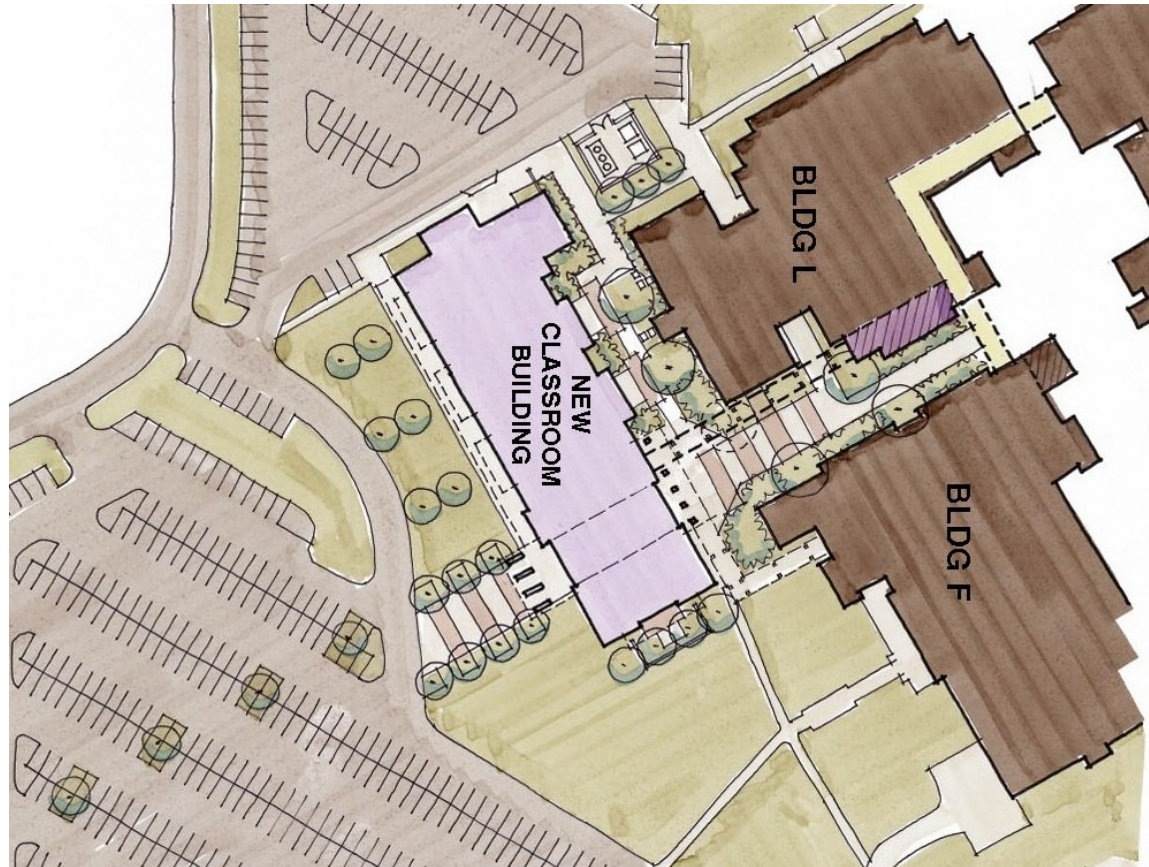
- Learning Studios - various sizes
- Multi Purpose Rooms
- Student Workspaces
- Faculty Offices
- Division Offices
- Counseling Spaces
- Faculty Incubator
- Support Spaces
- Café Sales / Seating Area



Eastfield College

Learning Center Building

Site Plan





Eastfield College

Learning Center Building

First Floor Plan



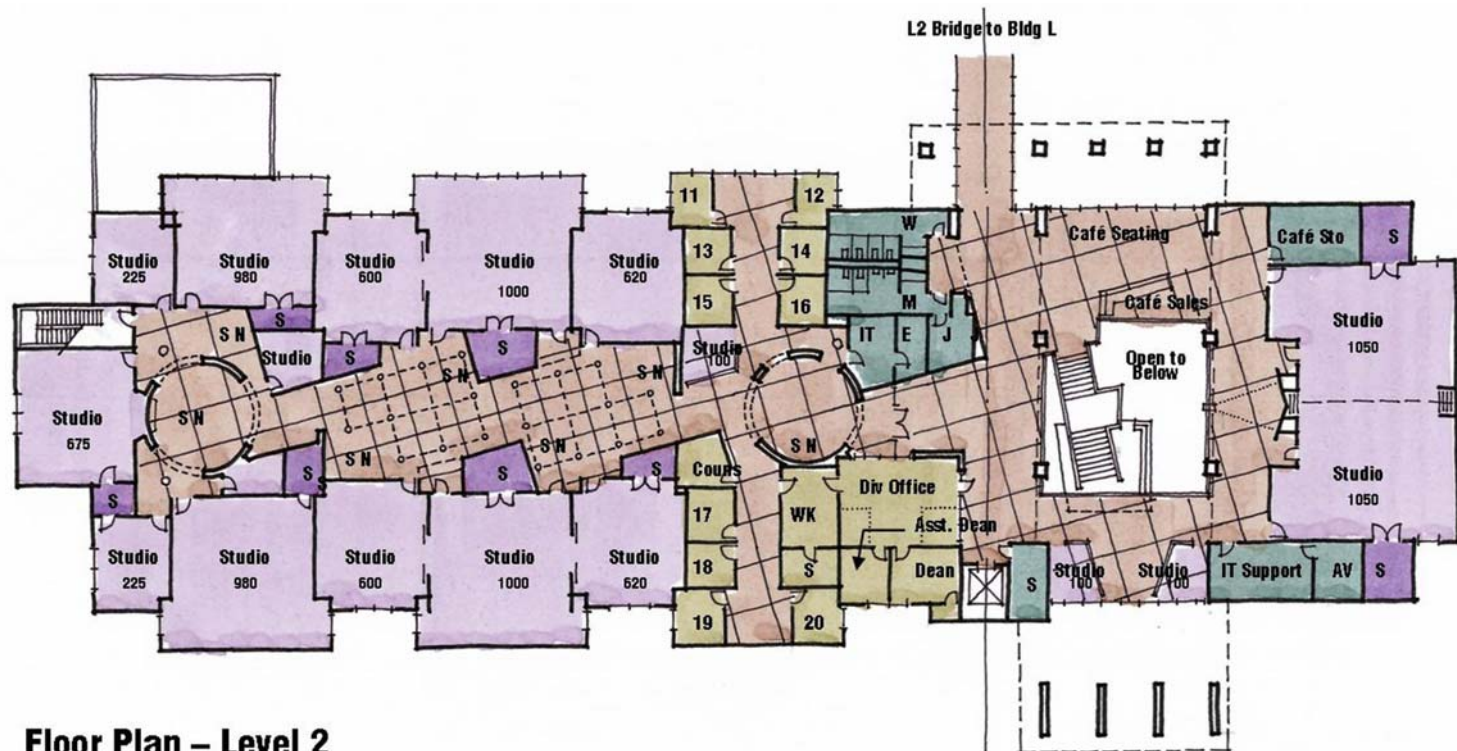
Floor Plan – Level 1



Eastfield College

Learning Center Building

Second Floor Plan



Floor Plan – Level 2



Eastfield College

Learning Center Building

View of West Entry



HKS

Eastfield College General Classroom Building
02/05/07



Eastfield College

Learning Center Building

West Elevation

HKS

Eastfield College General Classroom Building
02/05/07





Eastfield College

Learning Center Building

View from West Parking Lot





Eastfield College

Learning Center Building

View from Southeast



HKS

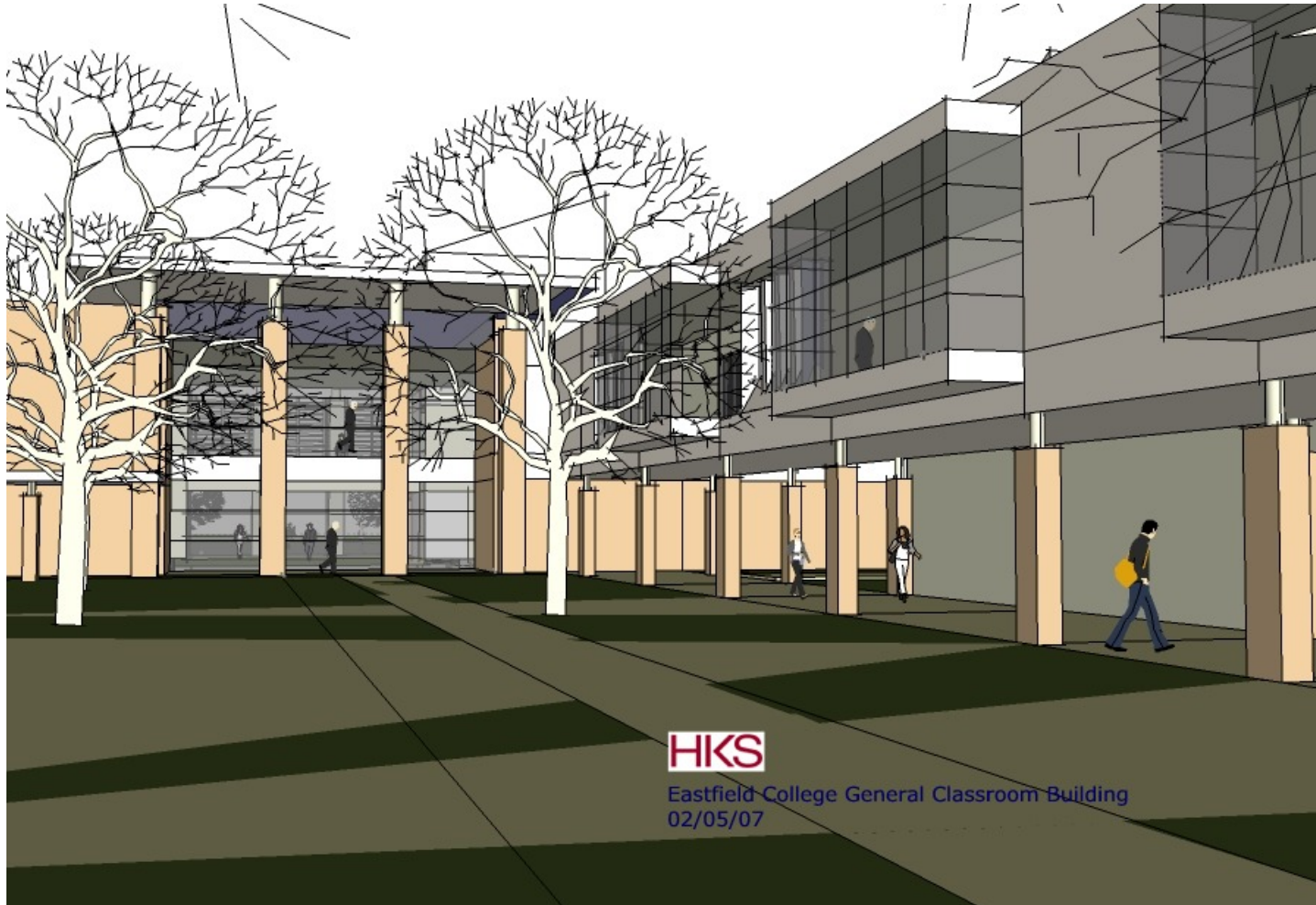
Eastfield College General Classroom Building
02/05/07



Eastfield College

Learning Center Building

View from Existing Courtyard





Eastfield College

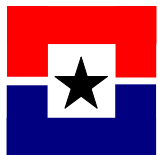
Learning Center Building

New Courtyard Area Looking South



HKS

Eastfield College General Classroom Building
02/05/07



Eastfield College

Learning Center Building

- Construction Start Date: August 2007
- Construction Completion Date: August 2008
- Gross Square Footage: 54,500
- Construction Budget: \$10,995,000



Parent Child Study Center

- Teacher Prep Classroom
- Student Advisement
- Grants Management
- Student Resource Center
- Family Resource Center
- Wellness Room
- Multi-Purpose Room
- Food Preparation Area
- Infant Classroom
- Toddler Classroom
- Multi-Age Classroom
- School Age Classroom
- Observation Areas
- Exterior Playgrounds



Eastfield College

Parent Child Study Center

- Construction Start Date: May 2008
- Construction Completion Date: March 2009
- Gross Square Footage: 18,000
- Construction Budget: \$4,617,898



Workforce Development

- Classrooms
- Testing Labs
- Training Simulator Space
- Conference Room
- Study Spaces
- Police Academy/CJ/
Homeland Security
- Faculty Offices
- General Business Space
- Business Center
- Faculty Meeting Space
- Language Lab
- Business Incubators



Eastfield College

Workforce Development

- Construction Start Date: July 2008
- Construction Completion Date: June 2009
- Gross Square Footage: 44,500
- Construction Budget: \$5,200,000



Industrial Technology

- Lecture Spaces
- Welding Shops
- Automotive Diagnostics Lab
- Vehicle Storage Area
- Renovation of Existing Welding Spaces
- Emerging Technologies Labs
- Automotive Technology Shop
- Engine Performance Shop
- Display Area
- Support Spaces



Eastfield College

Industrial Technology

- Construction Start Date: July 2008
- Construction Completion Date: August 2009
- Gross Square Footage: 43,500
- Construction Budget: \$5,293,958



2004 Bond Program



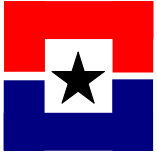
North Lake College



North Lake College

Site Plan





North Lake College

Aerial View

Workforce
Development
Center

Parking

General
Purpose
Building

Science
and
Medical
Professions





Science and Medical Professions Building New Building

- A&P Lab
- SCIT Lab
- A&P/SCIT Lab
- Chemistry Lab
- Related Prep Areas
- Student Lounge Area
- Faculty Offices
- Adjunct Office Area
- Large Classroom
- Medium Classrooms
- Small Classrooms
- Storage Room

Renovation

- Division Offices
- Microbiology

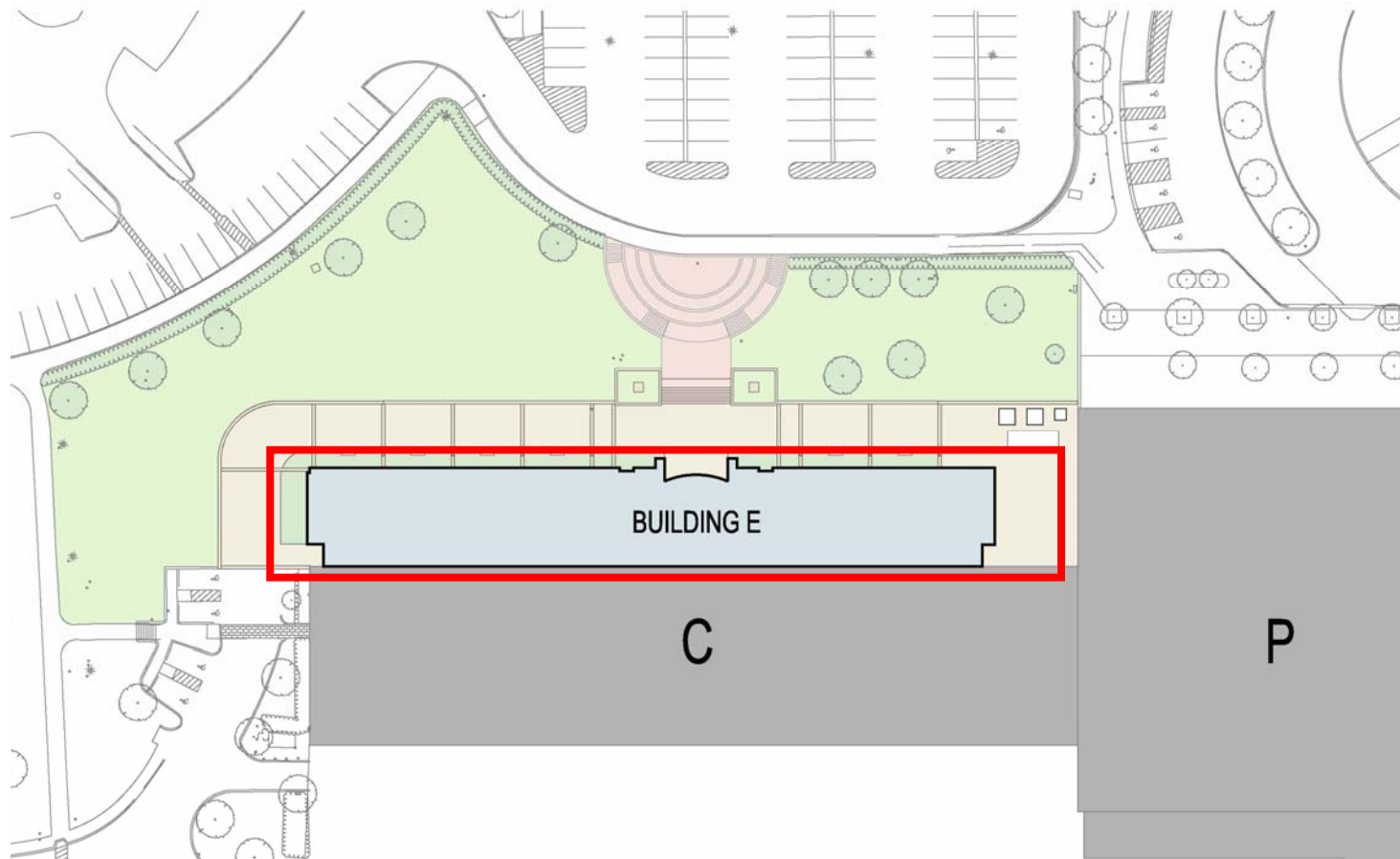
Mechanical Infrastructure Upgrades to Campus



North Lake College

Science and Medical Professions Building

Site Plan

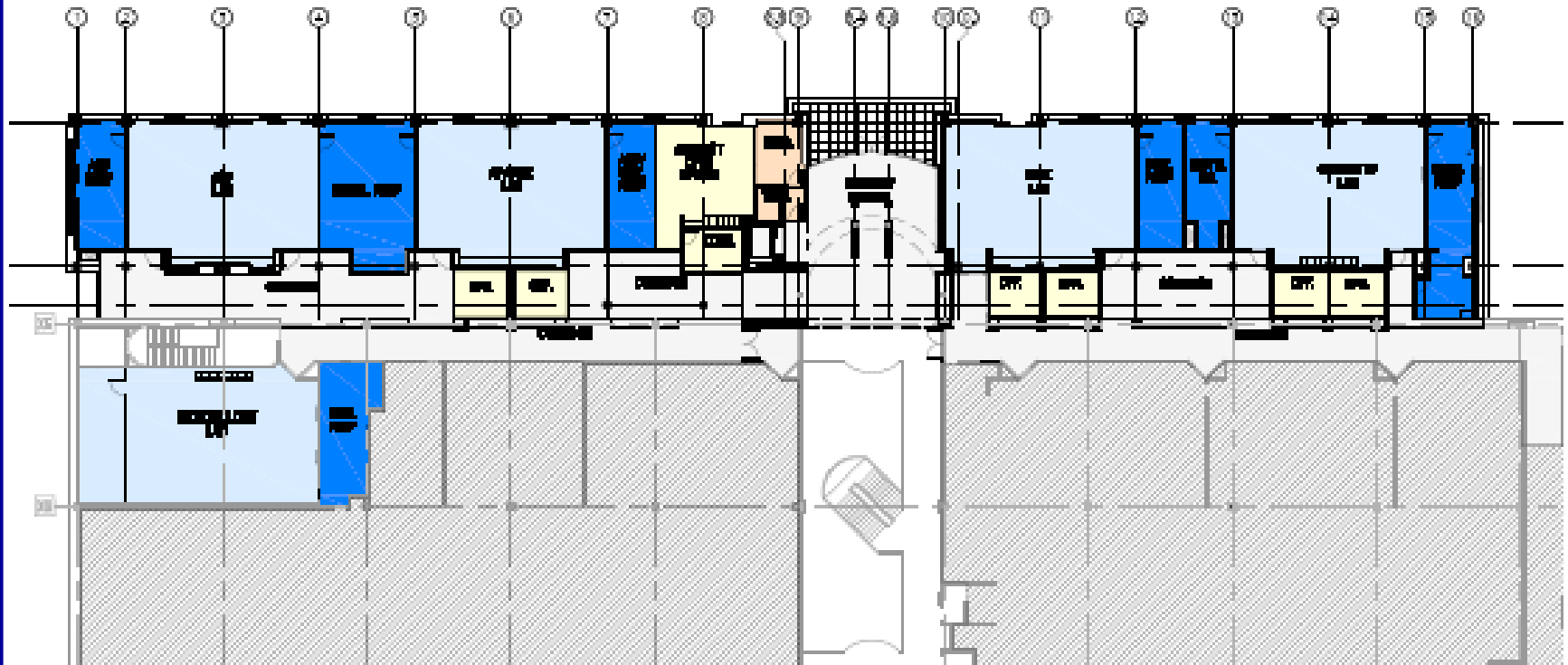




North Lake College

Science and Medical Professions Building

Upper Level Plan



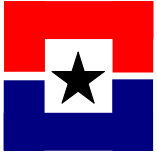


North Lake College

Science and Medical Professions Building

Lower Level Plan





North Lake College

Science and Medical Professions Building

View from Southwest





North Lake College

Science and Medical Professions Building

View from Northwest





North Lake College

Science and Medical Professions Building

- Construction Start Date: September 2007
- Construction Completion Date: December 2008
- Gross Square Footage: 26,094
- Construction Budget: \$11,326,584



North Lake College

New General Purpose Building

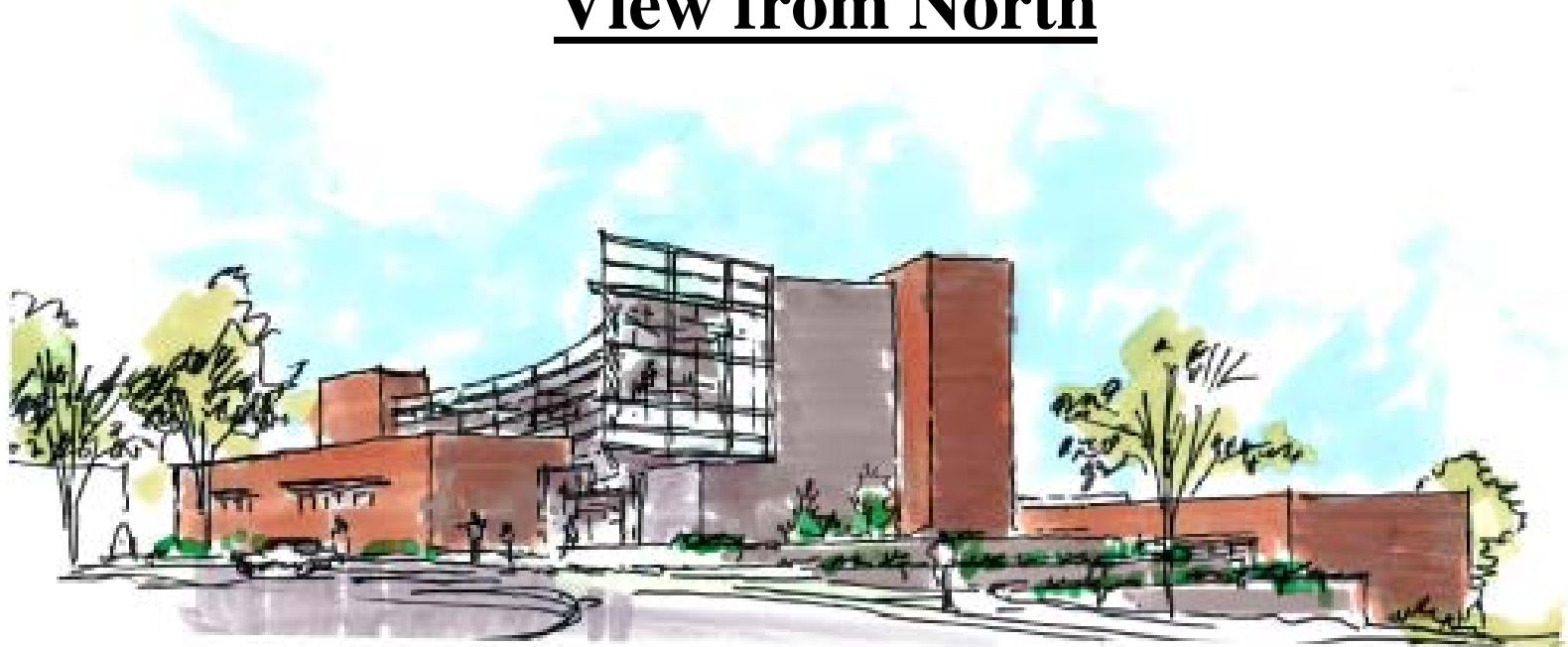
- Large Classrooms
- Learning Community Center
- Large Group Instruction Classroom
- Administrative Suites
- Human Resources
- Building Support Areas
- Video Technology Studio
- Visual and Performing Arts Division Offices
- Faculty Offices
- Computer Graphics
- 2D Design / Art Lab
- Painting / Drawing Lab
- 200-400 Parking Spaces



North Lake College

General Purpose Building

View from North



North Lake College- Building G

Conceptual Schematics

Concept Study





North Lake College

General Purpose Building

View from South



View from Southeast





North Lake College

General Purpose Building

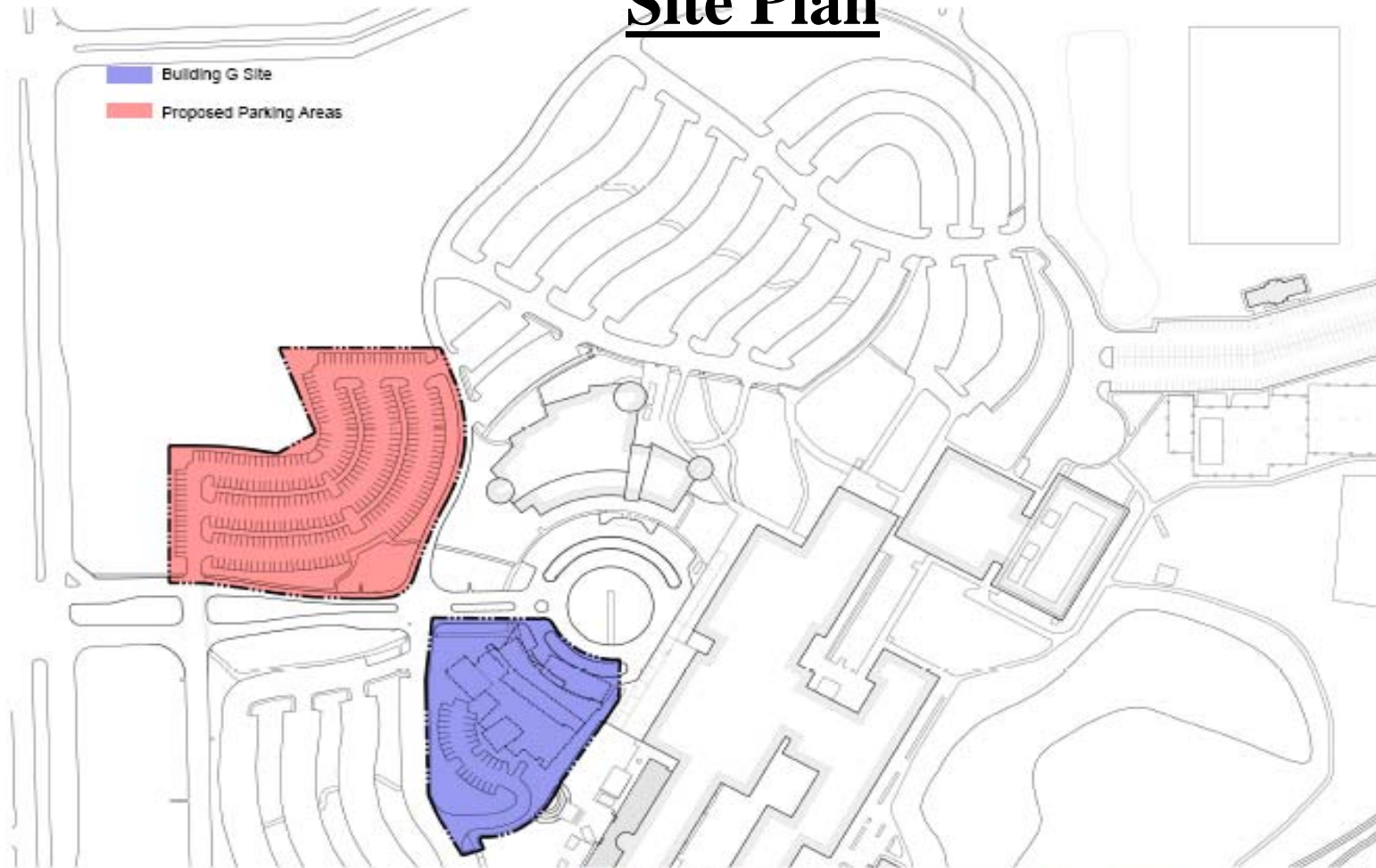
- Construction Start Date: July 2008
- Construction Completion Date: August 2009
- Gross Square Footage: 40,000
- Approximately 20 Adjacent Parking Spaces
- Construction Budget: \$8,145,570



North Lake College

Additional Parking

Site Plan

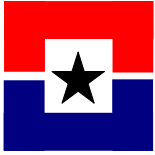




North Lake College

Additional Parking

- Construction Start Date: October 2007
- Construction Completion Date: May 2008
- Approximately 200 – 400 Parking Spaces
- Construction Budget: \$1,119,205



Workforce Development Center

Interior finish-out of the lower level of the new Library

- Instructional Spaces
- Computer Lab
- Conference / Training Room
- Offices and Staff Workspace



North Lake College

Workforce Development Center

- Construction Start Date: November 2007
- Construction Completion Date: April 2008
- Gross Square Footage: 10,000 approx.
- Interior Finish-Out
- Construction Budget: \$1,184,422



The End