



*Dallas County Community College District*

---

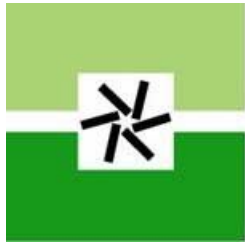
# **2004 Bond Program**

August 7, 2007



# *2004 Bond Program*

---



## **Brookhaven College**



# Brookhaven College

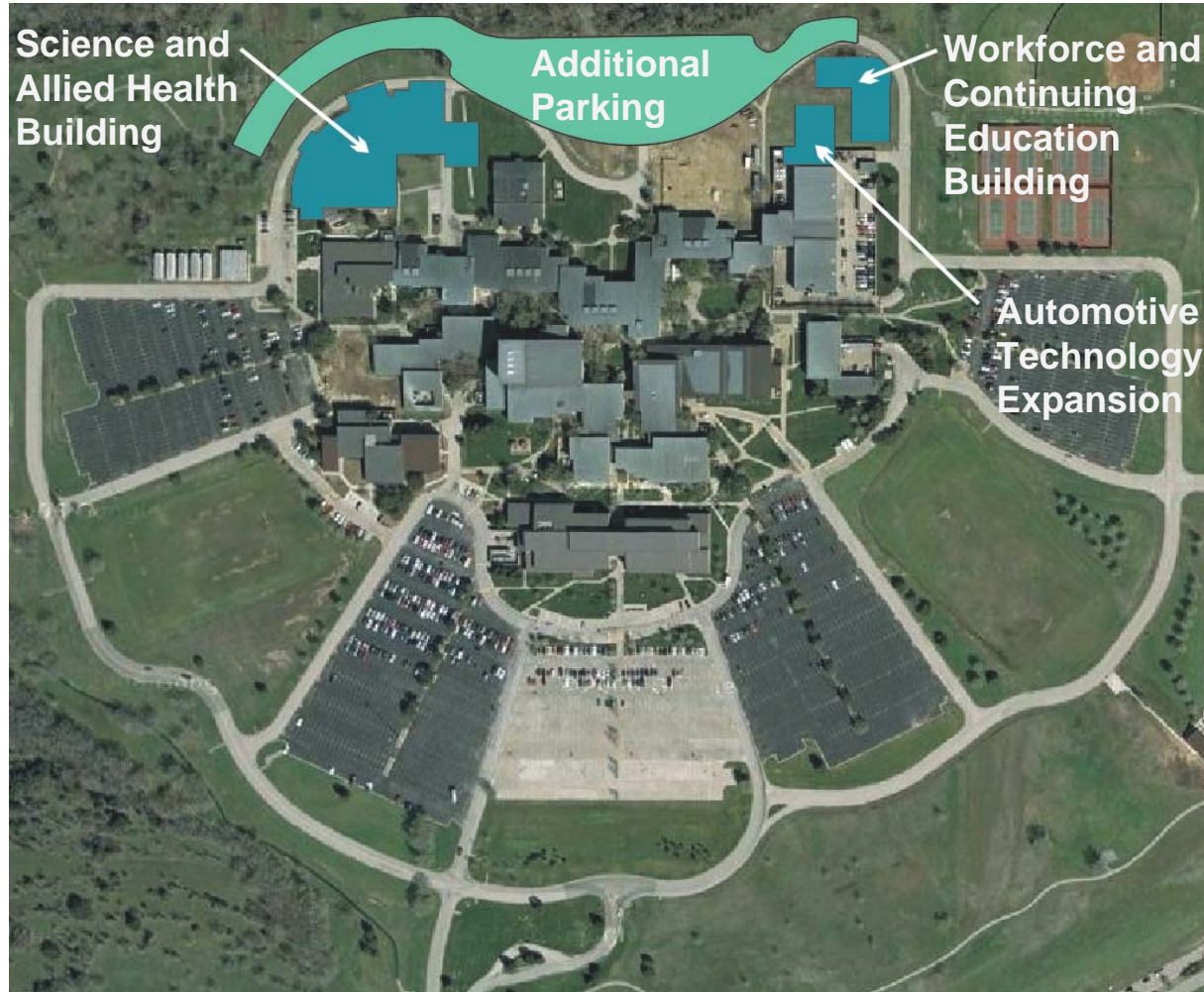
## Campus Map





# *Brookhaven College*

## Aerial View





# *Brookhaven College*

## Aerial View





# Brookhaven College

*Science & Allied Health Building*

## New Building

- Biology Labs
- Chemistry Labs
- Microbiology Lab
- Emergency Medical Services Program
- Radiological Tech Program
- Nursing Program
- Informal Student Learning Areas
- Faculty Offices
- Adjunct Office Area
- Large Classrooms
- Medium Classrooms
- Small Classrooms
- Storage Room
- Lecture Hall

## Renovation

- K-Building Adaptive Remodel

## Mechanical Infrastructure Upgrades to Campus

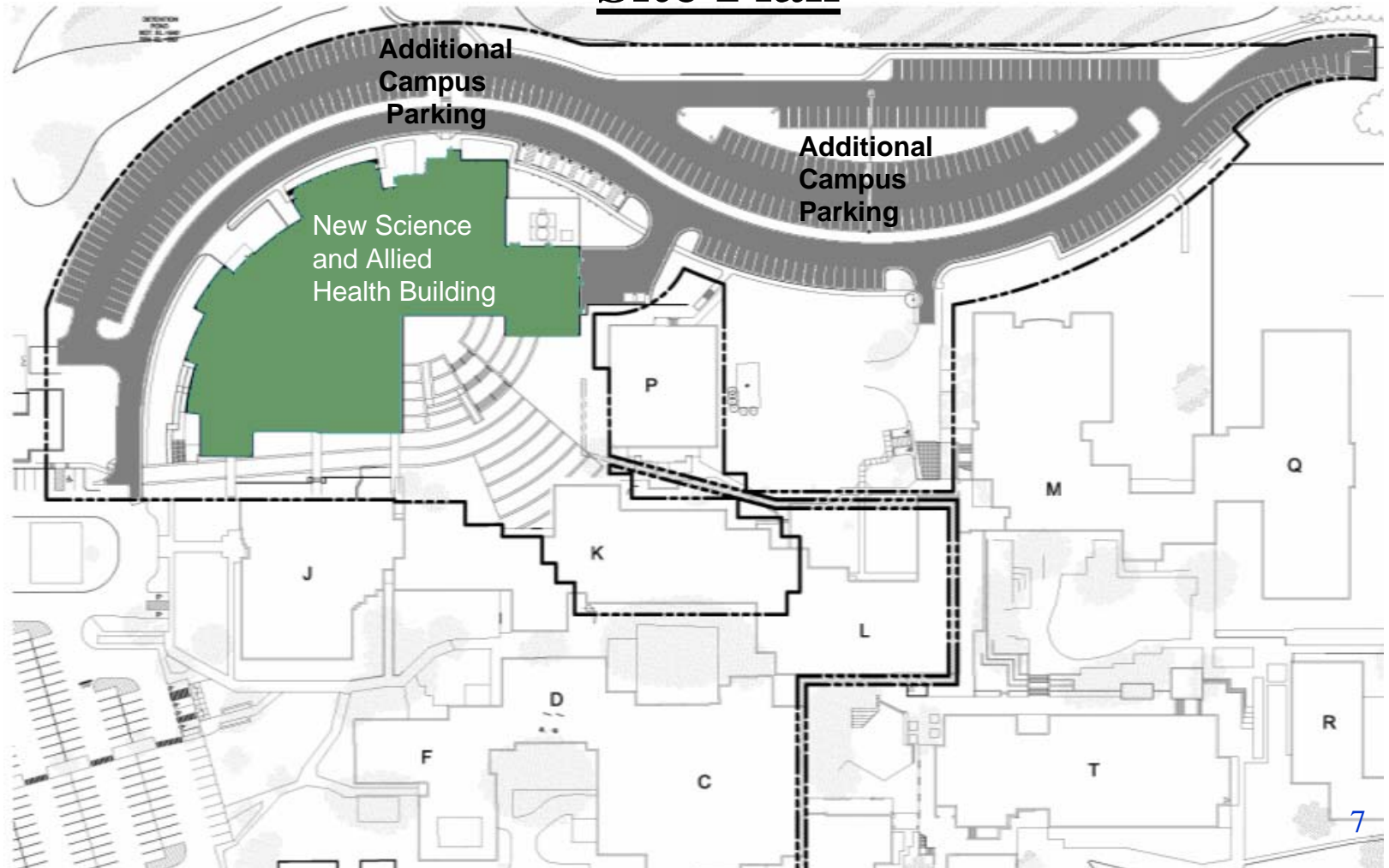
- New Physical Plant (Serving all bond program projects and providing for future growth)
- Additional Parking



# Brookhaven College

*Science & Allied Health Building*

## Site Plan



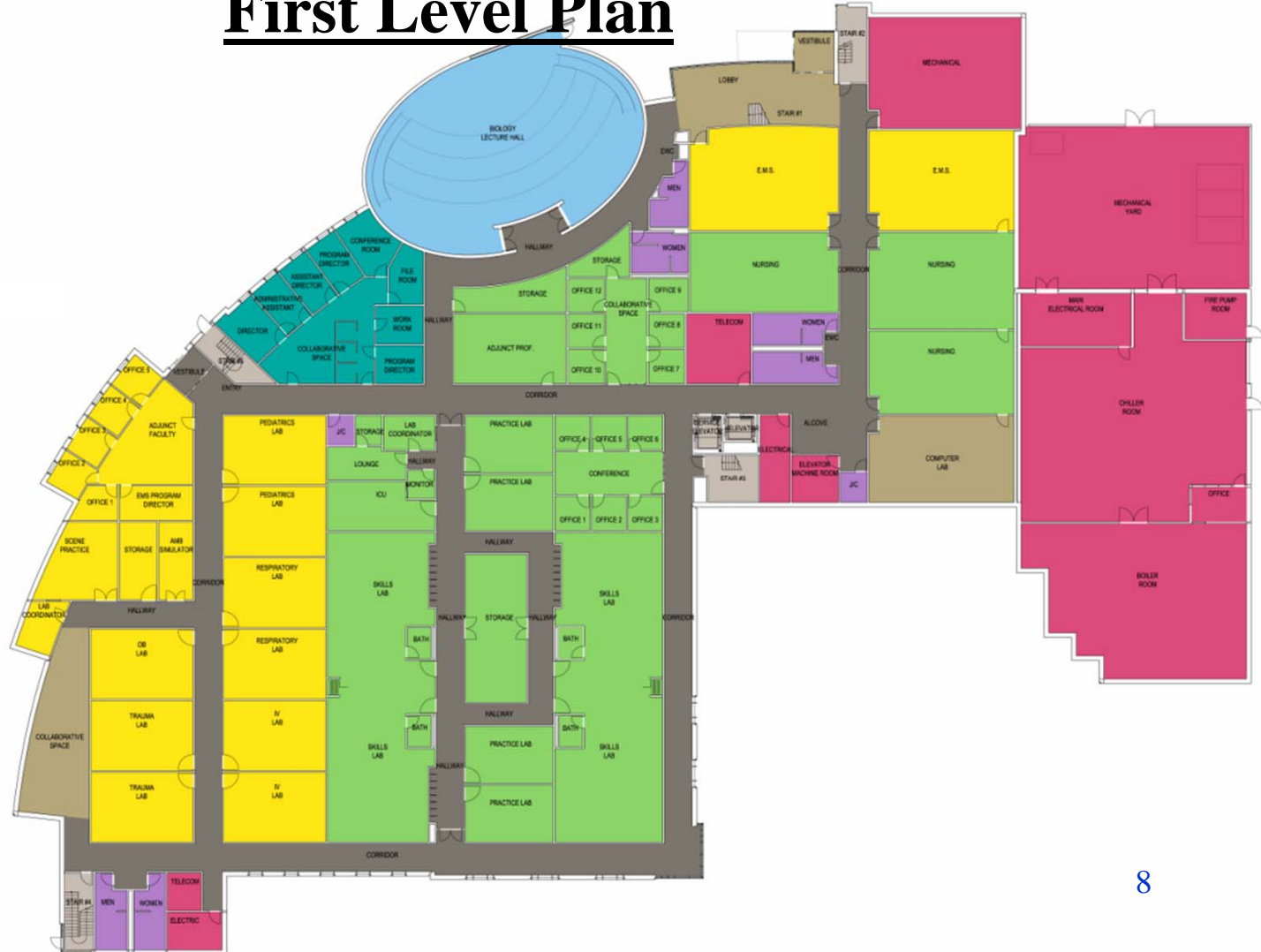


# Brookhaven College

## Science & Allied Health Building

### First Level Plan

- EMS
- RADIOLOGY
- NURSING
- CHEMISTRY
- BIOLOGY
- DIVISION OFFICES
- SUPPORT
- BACK OF HOUSE
- PUBLIC AREA
- HORIZONTAL CIRCULATION
- VERTICAL CIRCULATION







# Brookhaven College

## Science & Allied Health Building

### First Level Plan— EMS & Nursing Labs

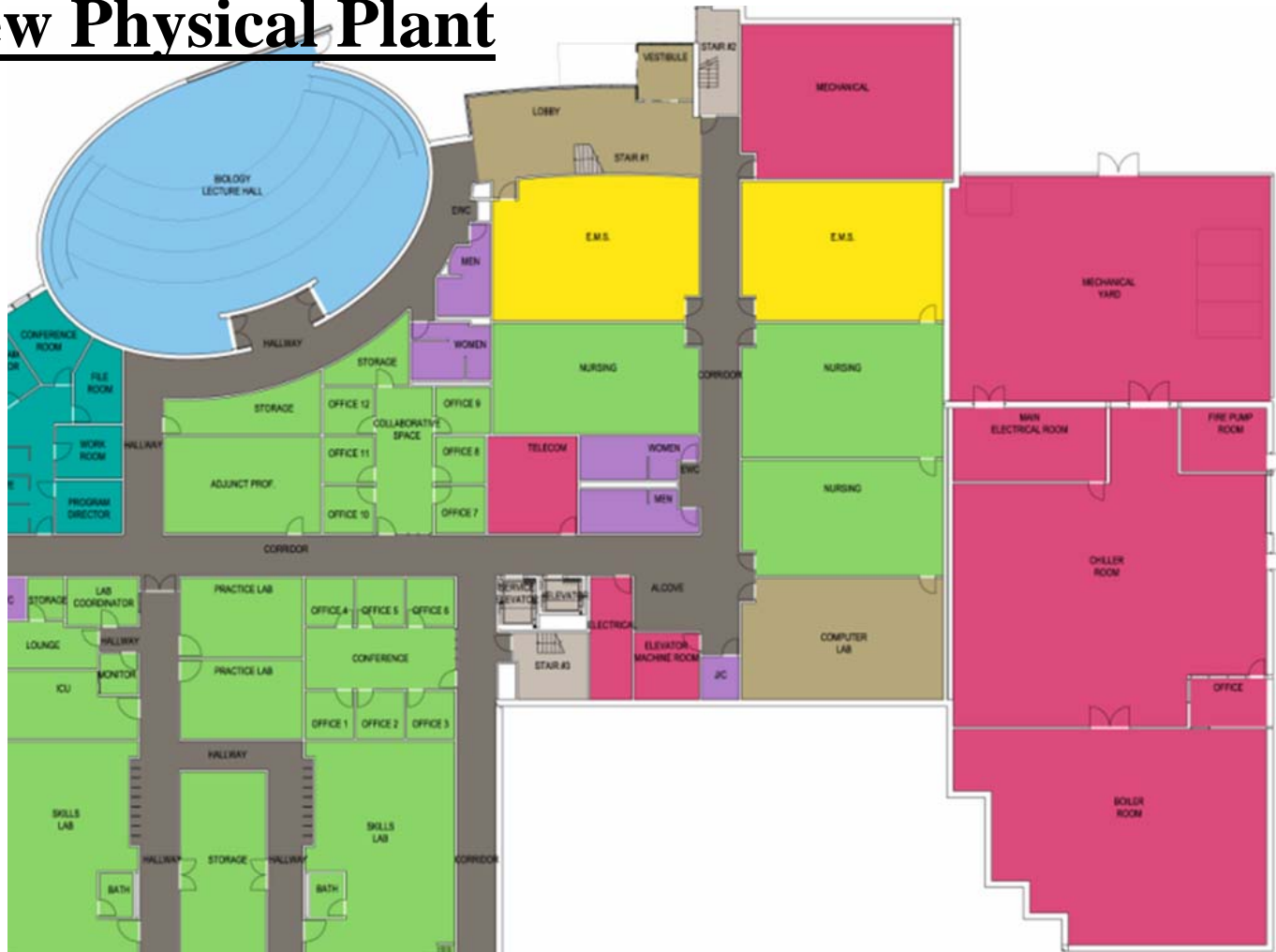




# Brookhaven College

Science & Allied Health Building

## First Level Plan—Classrooms, Support Areas, and New Physical Plant



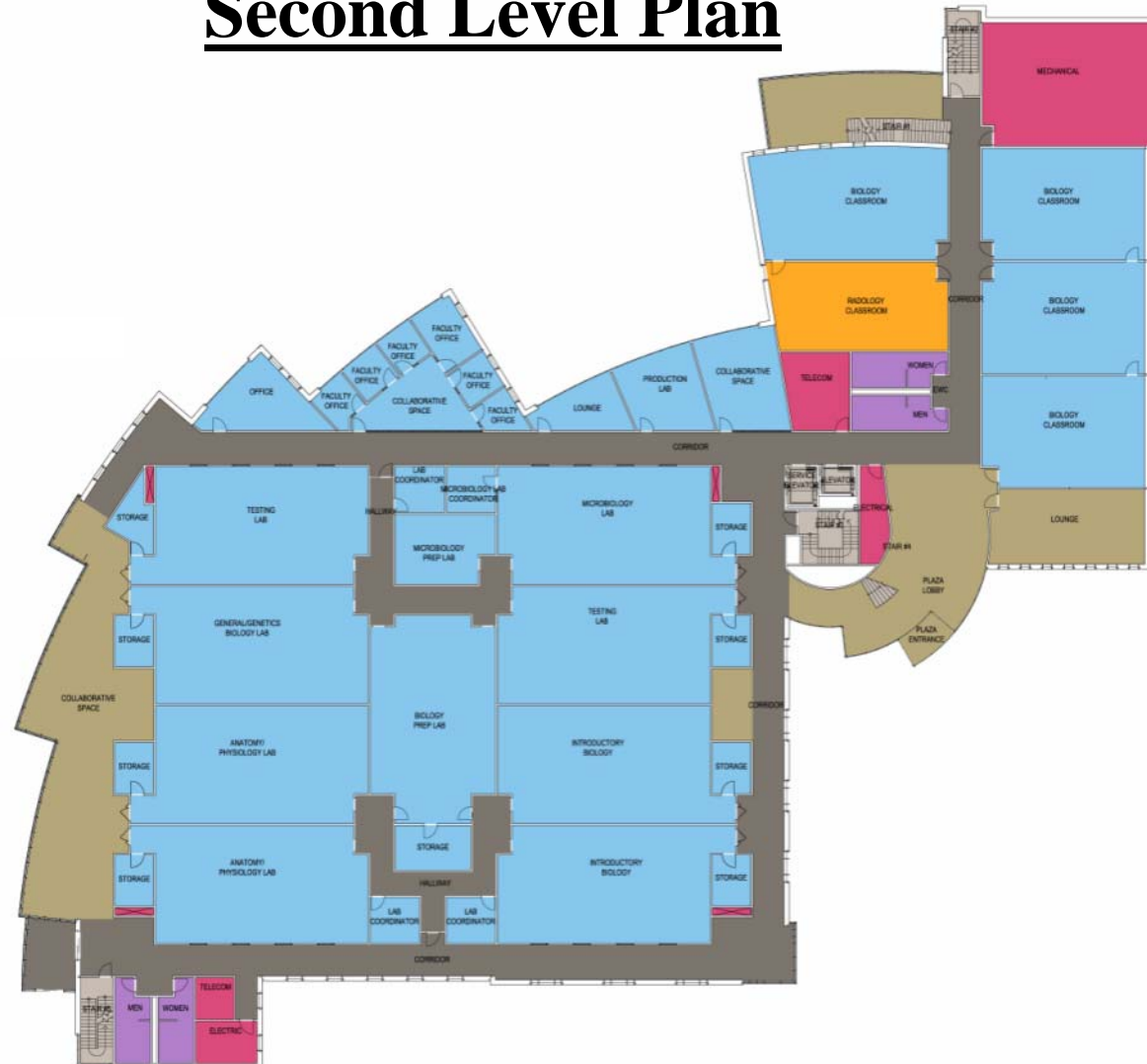


# Brookhaven College

## Science & Allied Health Building

### Second Level Plan

- EMS
- RADIOLOGY
- NURSING
- CHEMISTRY
- BIOLOGY
- DIVISION OFFICES
- SUPPORT
- BACK OF HOUSE
- PUBLIC AREA
- HORIZONTAL CIRCULATION
- VERTICAL CIRCULATION

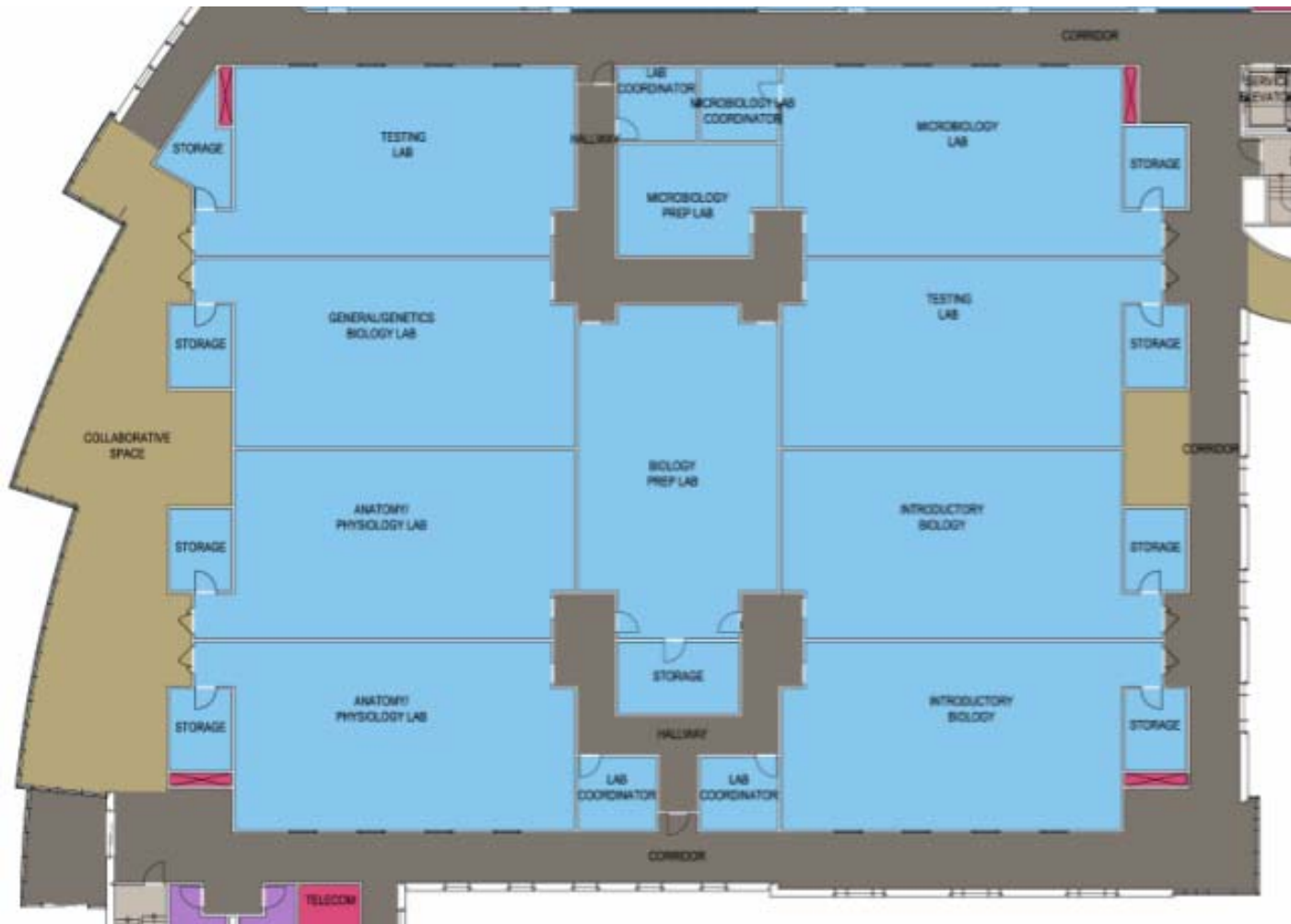




# Brookhaven College

*Science & Allied Health Building*

## Second Level Plan—Biology Labs





# Brookhaven College

*Science & Allied Health Building*

## Second Level Plan—Biology Classrooms



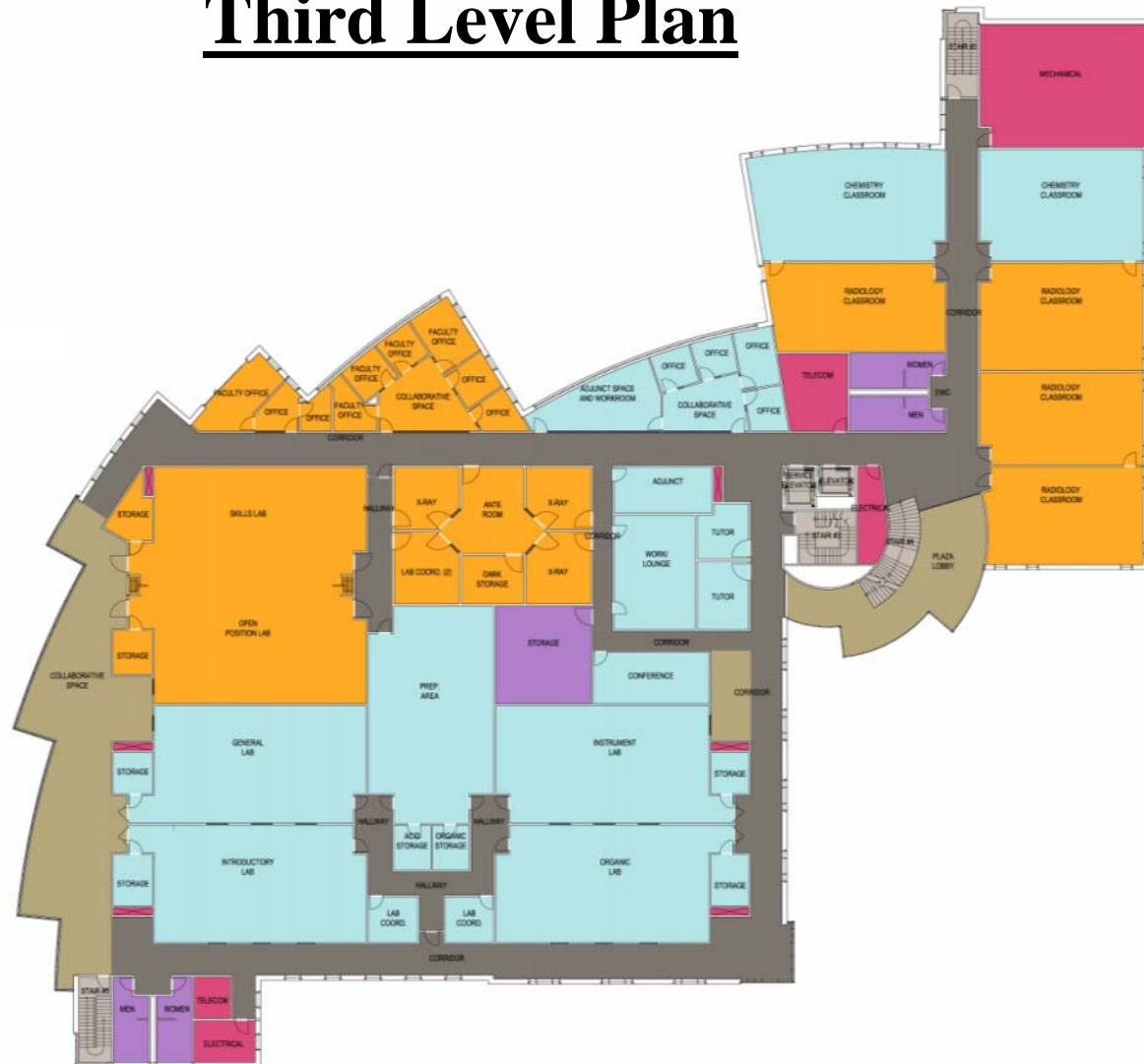


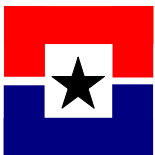
# Brookhaven College

## Science & Allied Health Building

### Third Level Plan

- EMS
- RADIOLOGY
- NURSING
- CHEMISTRY
- BIOLOGY
- DIVISION OFFICES
- SUPPORT
- BACK OF HOUSE
- PUBLIC AREA
- HORIZONTAL CIRCULATION
- VERTICAL CIRCULATION





# Brookhaven College

Science & Allied Health Building

## Third Level Plan— Radiology & Chemistry Labs

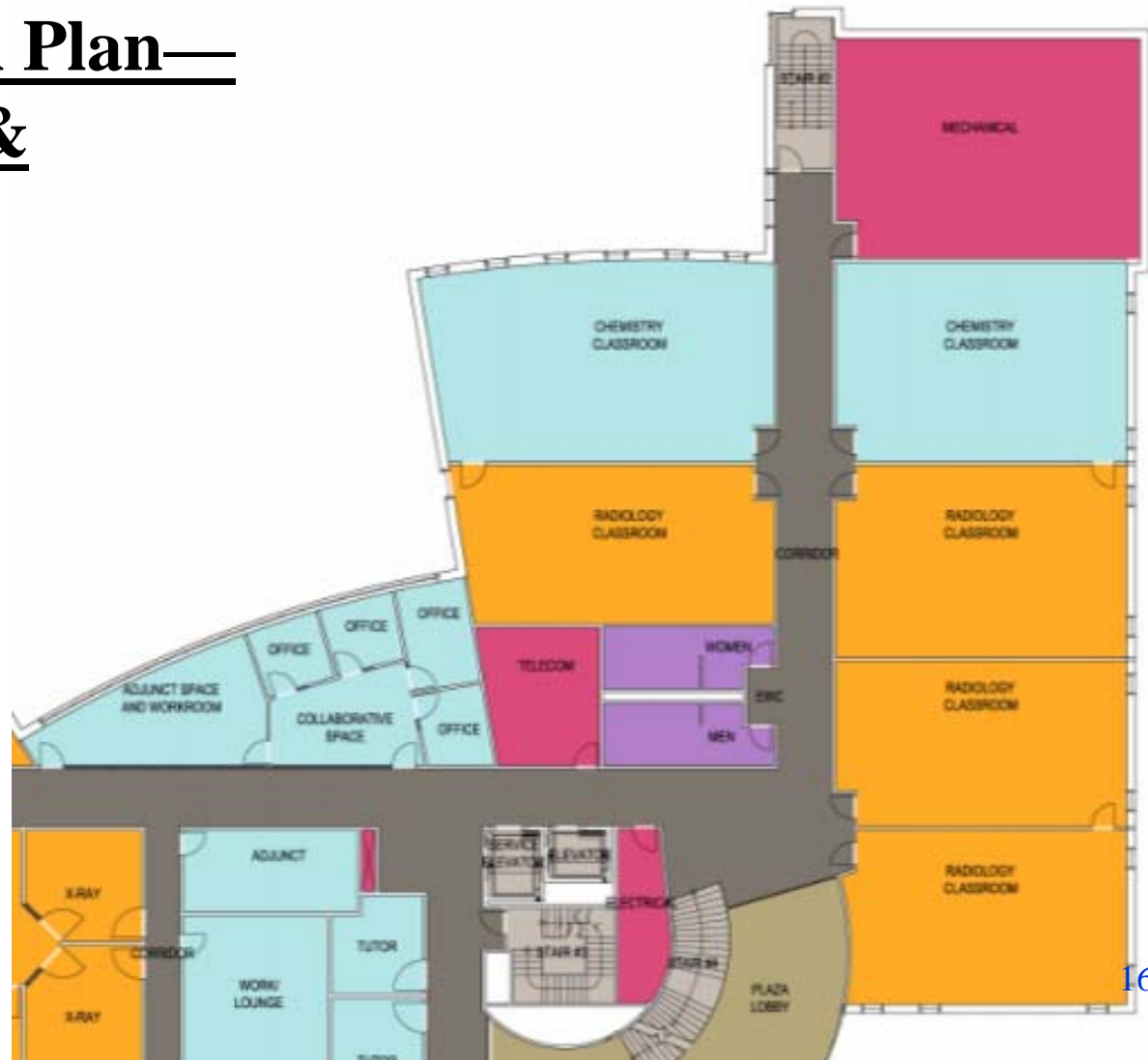




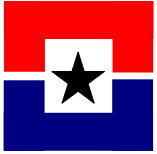
# Brookhaven College

Science & Allied Health Building

## Third Level Plan— Radiology & Chemistry Classrooms





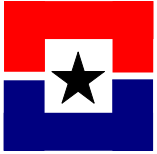


# *Brookhaven College*

## *Science & Allied Health Building*

### **View from North**





# *Brookhaven College*

*Science & Allied Health Building*

## **View from South**





# *Brookhaven College*

*Science & Allied Health Building*

## View from West





# *Brookhaven College*

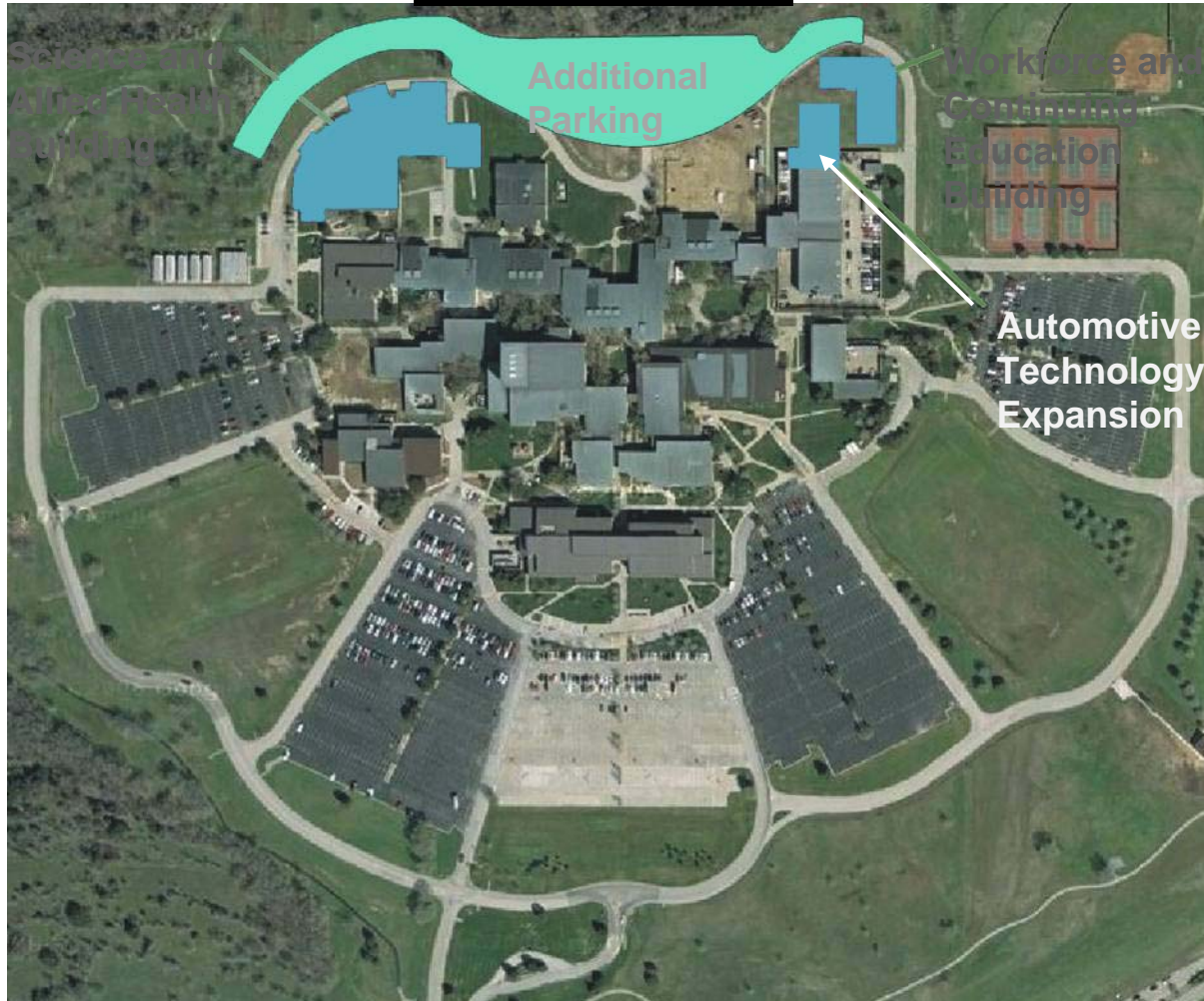
## *Science & Allied Health Building*

- Construction Start Date: November 2007
- Construction Completion Date: July 2009
- Square Footage: 146,900 Total
  - Science and Allied Health Building – 141,700
  - New Physical Plant – 5,200
- Construction Budget: \$37,000,000
  - Science and Allied Health Building – \$34,500,000
  - New Physical Plant & Parking – \$2,500,000



# *Brookhaven College*

## **Aerial View**





# *Brookhaven College*

## *Automotive Technology Expansion*

---

### **Addition (10,080 S.F.)**

- 12 New Bay Spaces (8,000 S.F.)
- Tool Room (2,080 S.F.)
- Alternative Fueled Vehicle Qualified Facility

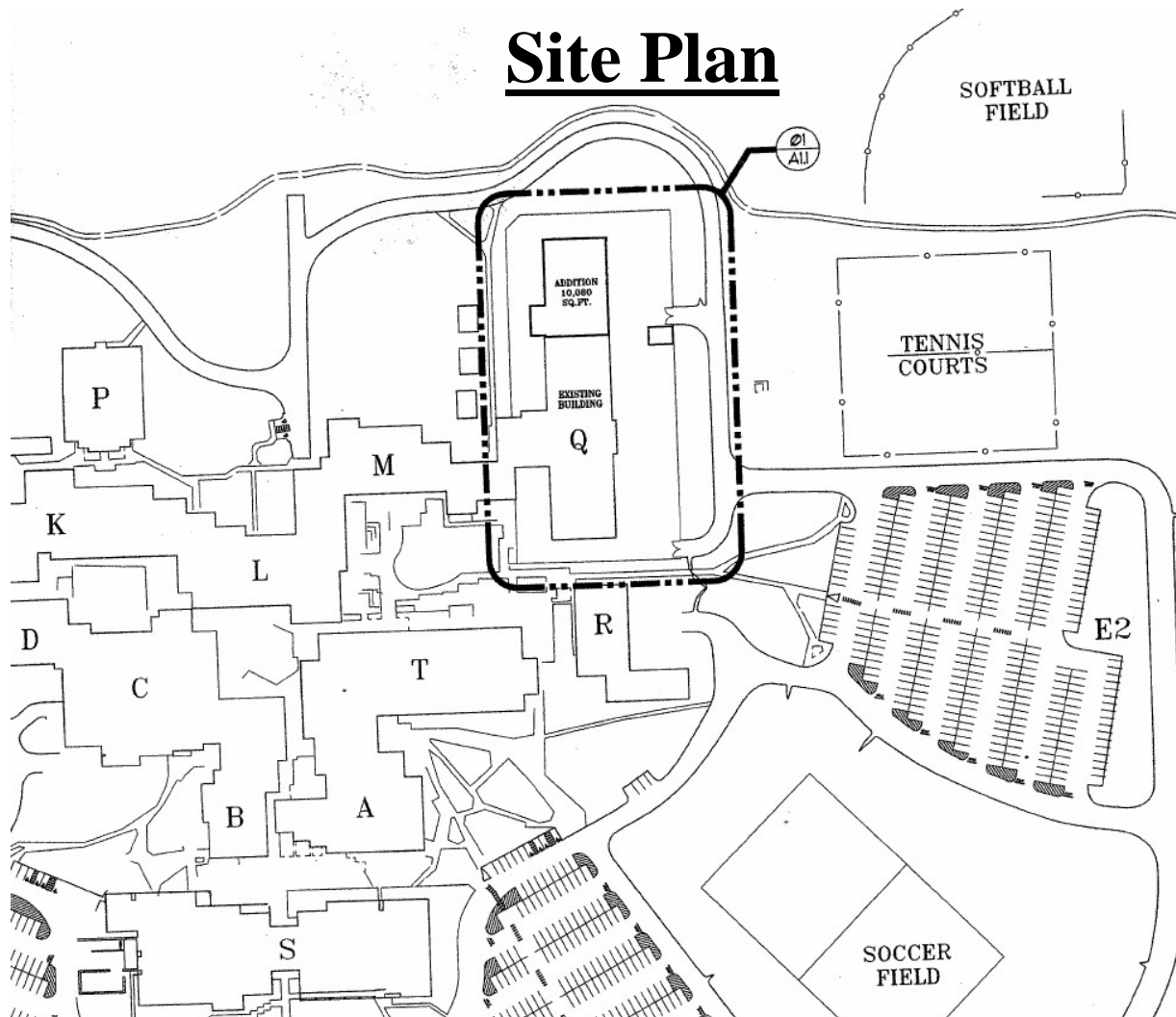
### **Renovation**

- Administrative Suite
- Faculty Offices
- General Support Spaces
- Women's Restroom
- 4 Convertible Classrooms
- Outside Vehicle Storage



# Brookhaven College

## Automotive Technology Expansion





# *Brookhaven College*

*Automotive Technology Expansion*

## View from East







# *Brookhaven College*

*Automotive Technology Expansion*

## **View from East**





# *Brookhaven College*

## *Automotive Technology Expansion*

---

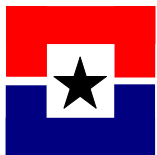
- Construction Start Date: February 2008
- Construction Completion Date: February 2009
- Square Footage (Addition):
  - 10,080 S.F. New Shop Space
- Square Footage (Renovation):
  - 8,000 S.F. Convertible Classroom Remodel
  - 2,000 – 3,000 S.F. Support Space Remodel
  - 17,000 S.F. Additional Outside Vehicle Storage
- Construction Budget: \$3,140,500



# *Brookhaven College*

## Aerial View





# *Brookhaven College*

*Workforce & Continuing Education Building*

## **New Building**

- Center to Service Business and Industry Clients
- Workforce Grant Research and Support
- Center for Corporate and Community Programming
- Classrooms for CE Programming and Corporate Training
- Computer/Information Technology Lab
- Office Space for Workforce and CE Staff



# *Brookhaven College*

## *Workforce & Continuing Education Building*

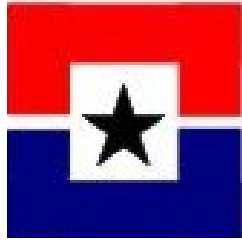
---

- Construction Start Date: June 2008
- Construction Completion Date: July 2009
- Square Footage: Approximately 28,500
- Construction Budget: \$5,500,000



# *2004 Bond Program*

---



**District Office  
at  
1601 Lamar**



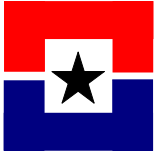
# *District Office*

1601 Lamar

## Site Plan



DISTRICT  
OFFICE



# *District Office*

*1601 Lamar*

---

## **District Office at 1601 Lamar**

- Office Spaces
- Conference Rooms
- Filing/Storage
- Board Room
- Art Exhibit Spaces
- Reception Areas
- Libraries
- Support Spaces
- History Gallery
- Staff Services

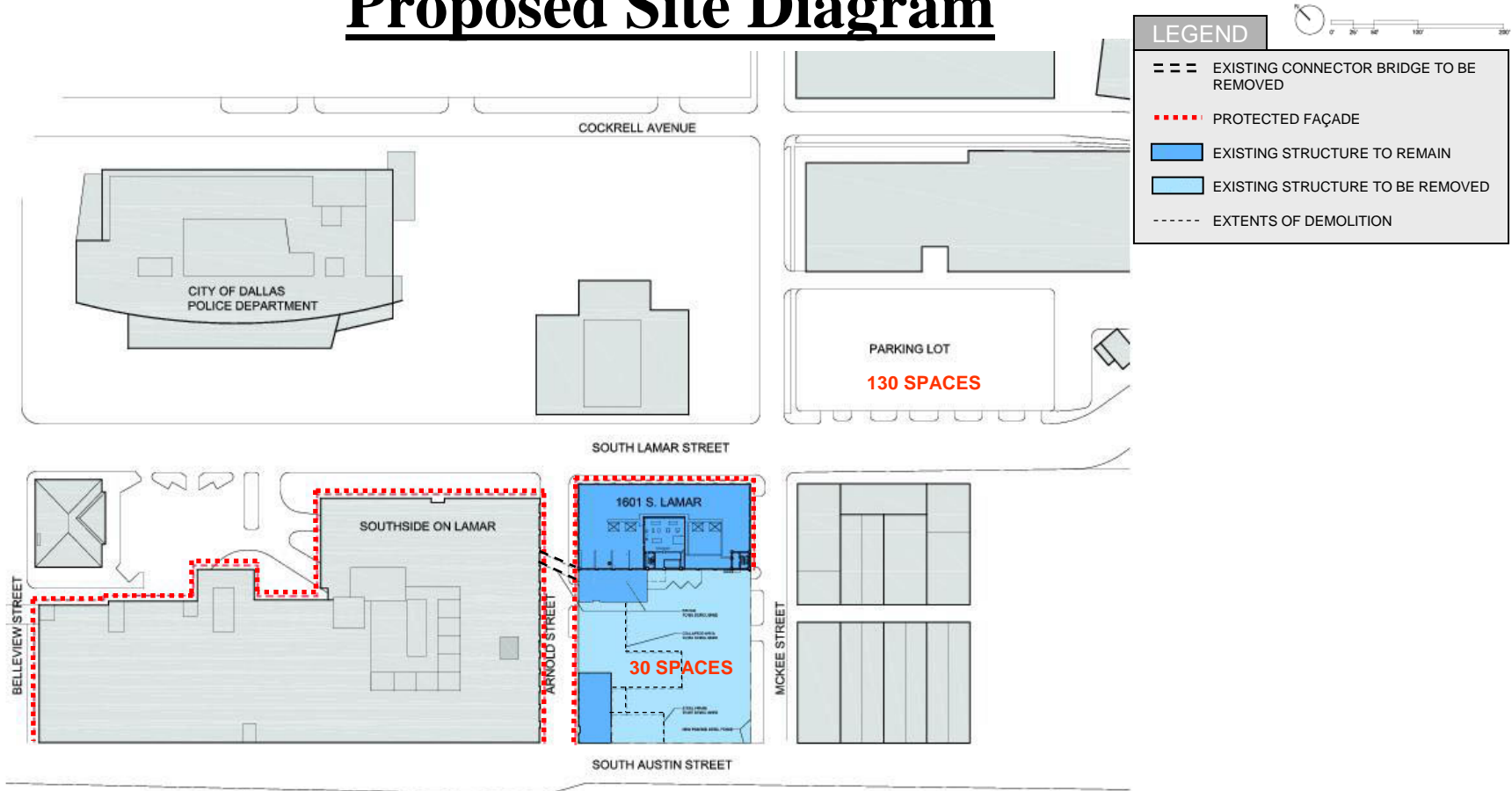




# District Office

## 1601 Lamar

### Proposed Site Diagram





# District Office

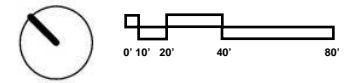
1601 Lamar

## Proposed Site Diagram



**LEGEND**

- EXISTING STRUCTURE TO REMAIN
- ① PROJECT AREA
- ② PROPOSED BOARDROOM LOCATION
- ③ COVERED PARKING LOT & LANDSCAPE FEATURE
- ④ DEFERRED FOR FUTURE DEVELOPMENT

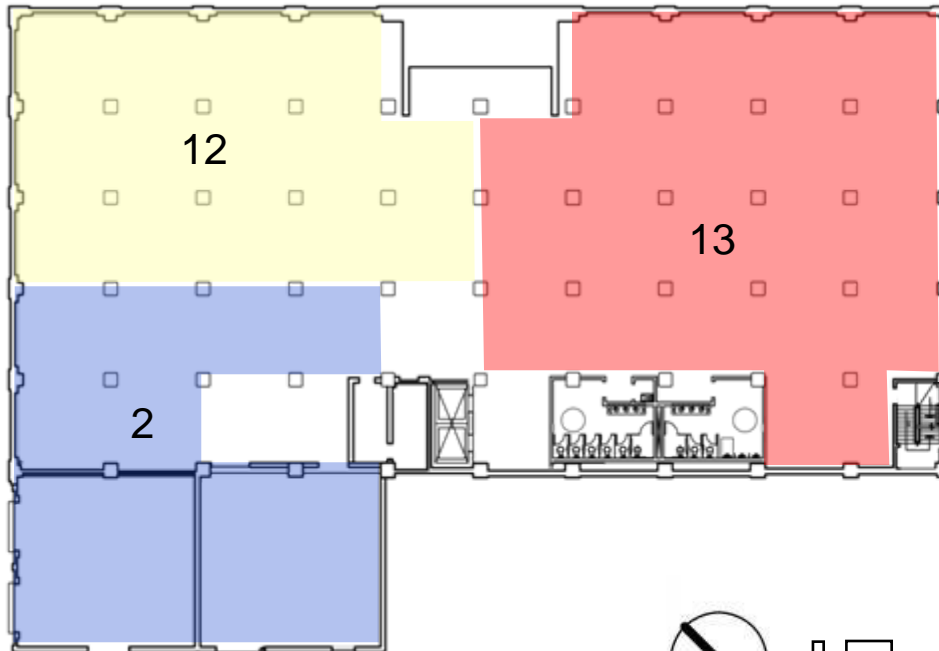
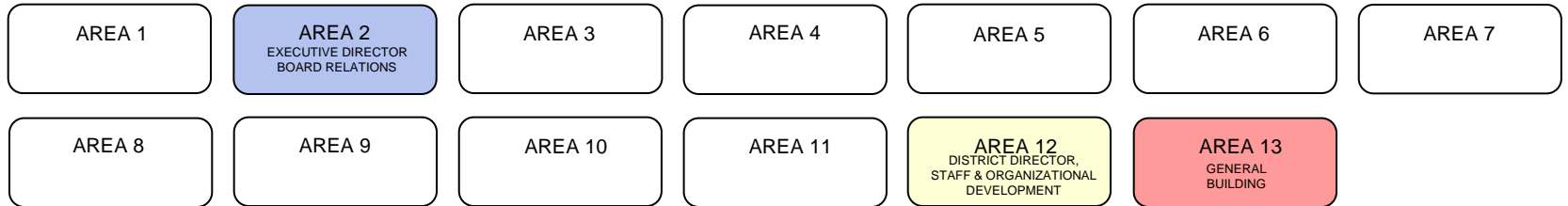




# District Office

1601 Lamar

## Proposed Schematic Space Allocations - Lower Level



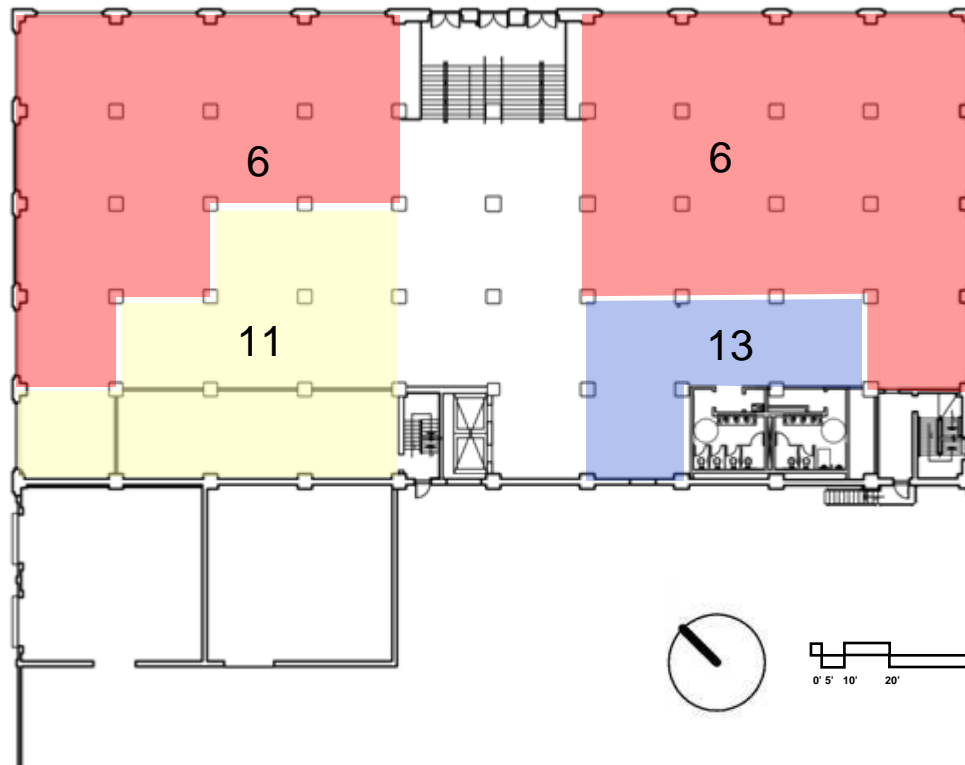


# District Office

1601 Lamar

## Proposed Schematic Space Allocations - First Level

AREA 1	AREA 2	AREA 3	AREA 4	AREA 5	AREA 6 EXECUTIVE DISTRICT DIRECTOR, DCCCD FOUNDATION	AREA 7
AREA 8	AREA 9	AREA 10	AREA 11 ASSOC. VICE CHANCELLOR, HUMAN & ORGANIZATIONAL DEV	AREA 12	AREA 13 GENERAL BUILDING	

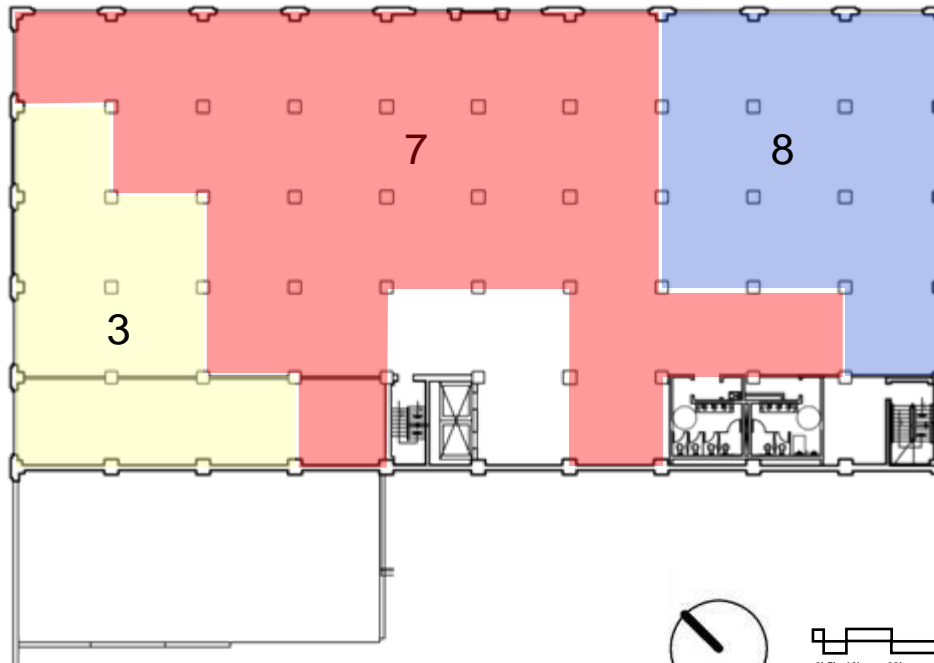
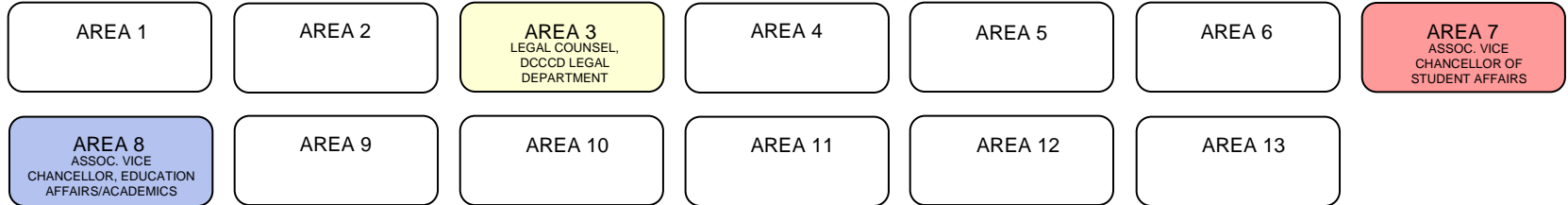


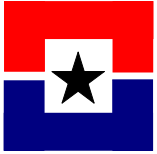


# District Office

1601 Lamar

## Proposed Schematic Space Allocations - Second Level

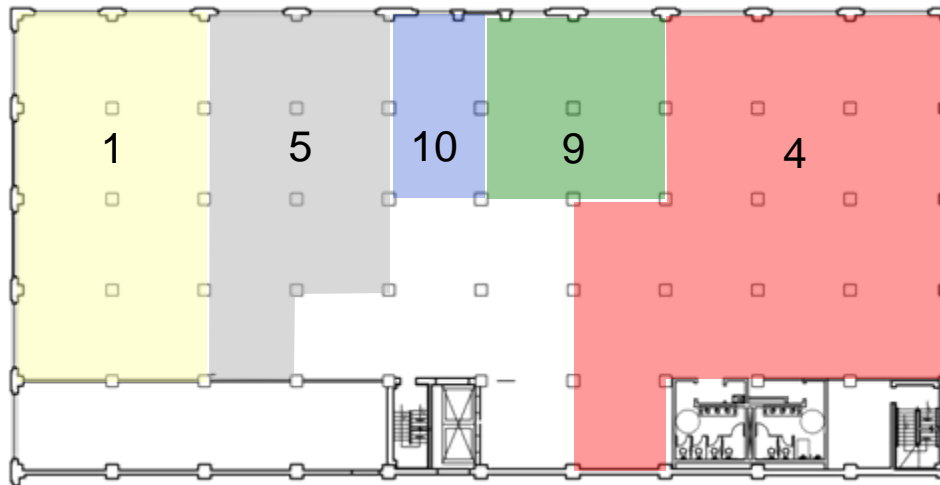
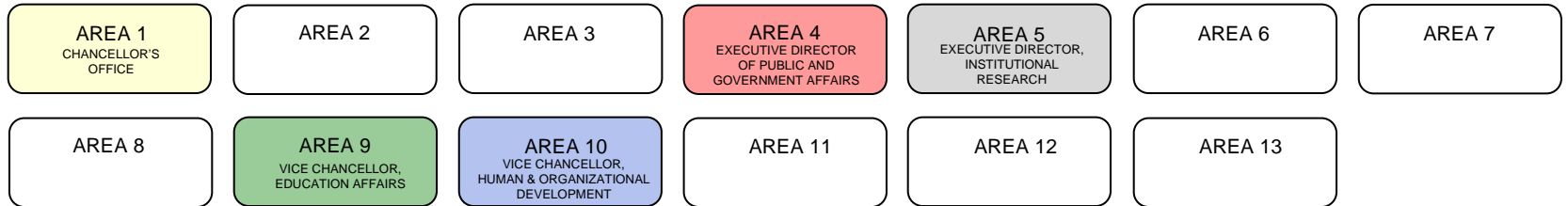




# District Office

1601 Lamar

## Proposed Schematic Space Allocations - Third Level





# *District Office*

*1601 Lamar*

## View of Facades



Lamar Street  
Building Facade



Arnold Street  
Building Facade



# *District Office*

*1601 Lamar*

## View of Facades



Lamar Street  
Building Facade



Proposed Lamar Street  
Building Facade





# *District Office*

*1601 Lamar*

## Additional Views of Site



McKee Street Building Facade



Austin Street Building Facade



Proposed Covered  
Parking Area



# *District Office*

1601 Lamar

## Proposed Lamar Facade





# *District Office*

*1601 Lamar*

## Proposed Entrance





# *District Office*

1601 Lamar

## Existing Interior Views

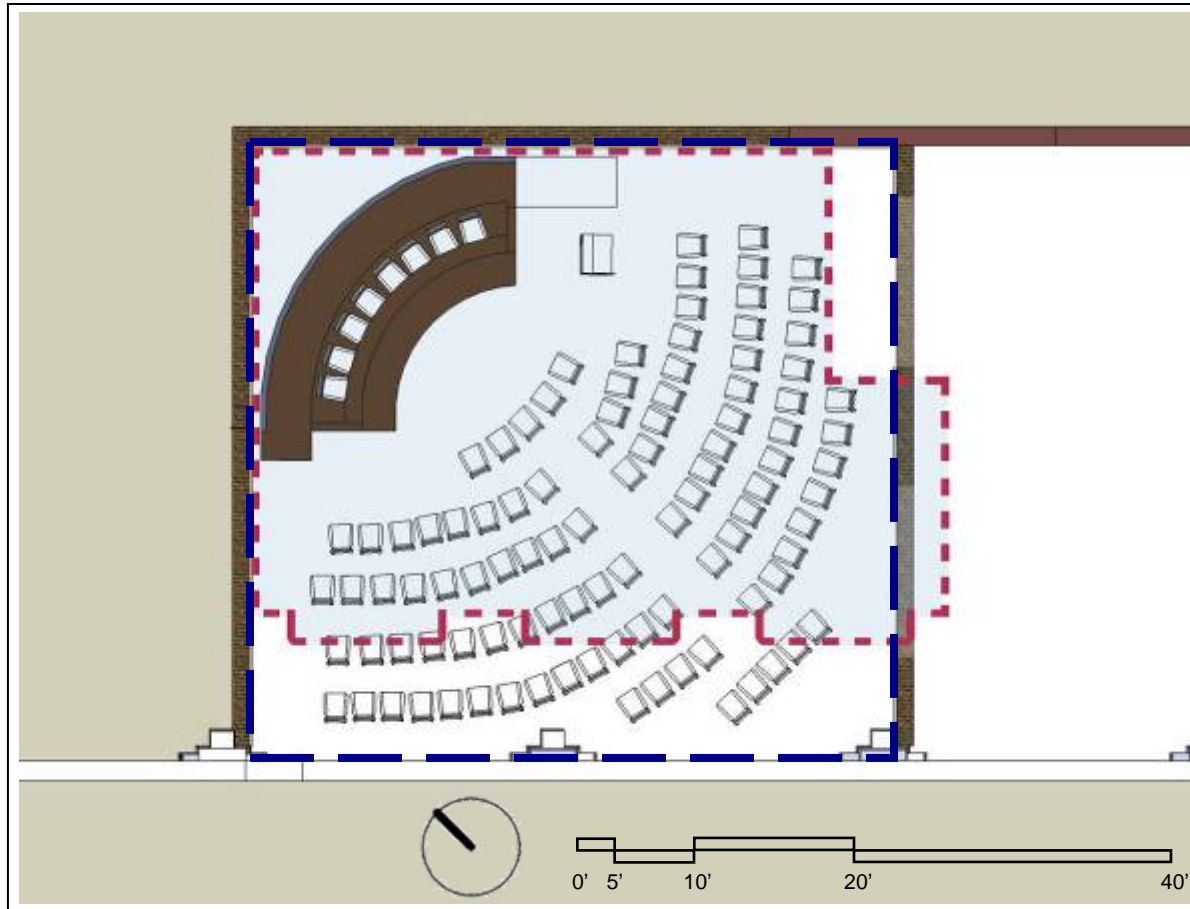




# District Office

1601 Lamar

## Preliminary Boardroom Floor Plan

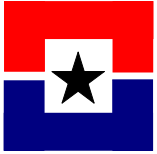


### CURRENT BOARD ROOM

60 Seats  
1077 SF  
Ceiling Height : 9'6"

### FUTURE BOARD ROOM

100 seats  
1422.5 SF  
Ceiling Height : 17'



# *District Office*

1601 Lamar

## Preliminary Board Room





# *District Office*

*1601 Lamar*

## Preliminary Board Room Rendering



**BEFORE  
CONSTRUCTION**



**AFTER  
CONSTRUCTION**



---

**Scope to Budget**

- **Original Budget: \$7,930,000.—**
  - Items added to Original Budget
    - Chilled Water/Four Pipe Mechanical System
    - Replacement of Existing Windows
    - Opening of Bricked-In Basement Windows & Installation of New Windows
    - Replacement of Storefront Entry
    - Demolition of Bridge
- **STB Budget: \$9,183,000.—**





# *District Office*

*1601 Lamar*

---

- Construction Start Date: December 2007
- Construction Completion Date: December 2008
- Gross Square Footage: 80,000 SF
- Construction Budget: \$9,183,000.00
- Construction Cost Per Square Foot: \$115 / SF



---

The End