



*Dallas County Community College District*

---

# **2004 Bond Program**

September 4, 2007



# *2004 Bond Program*

---



## **El Centro College**



# *El Centro College*

## **West Campus New Building**

- Classrooms/Computer Labs
- Administrative/Faculty Spaces
- Learning Resource Center
- Testing Space
- Student Spaces
- Community Rooms

## **Curricular Offerings**

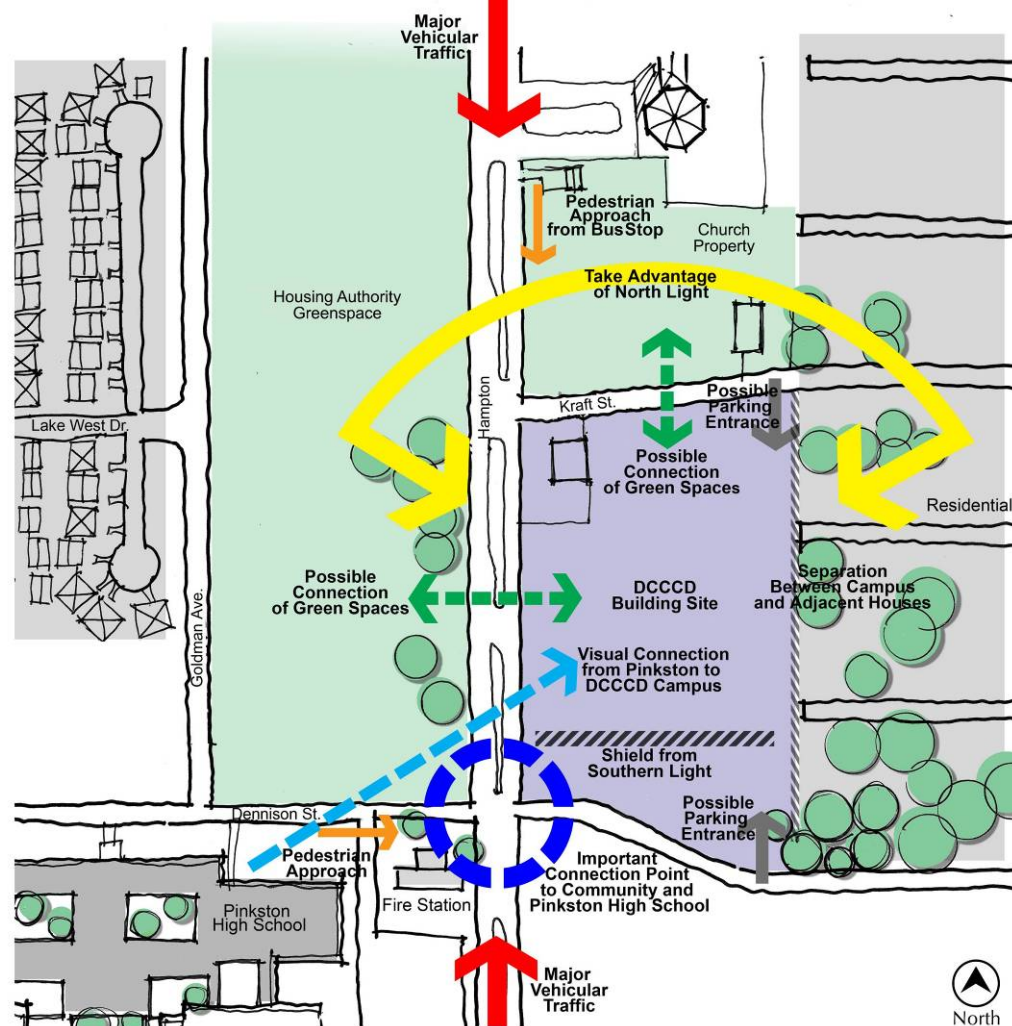
- Core Curriculum
- College Prep
- Dual Credit
- Continuing/Workforce Education – i.e. ESL, Job Skills Student Spaces
- Career – i.e. IT, Teacher Prep, Pre Nursing, Office Skills



# El Centro College

## West Campus

### Site Adjacencies

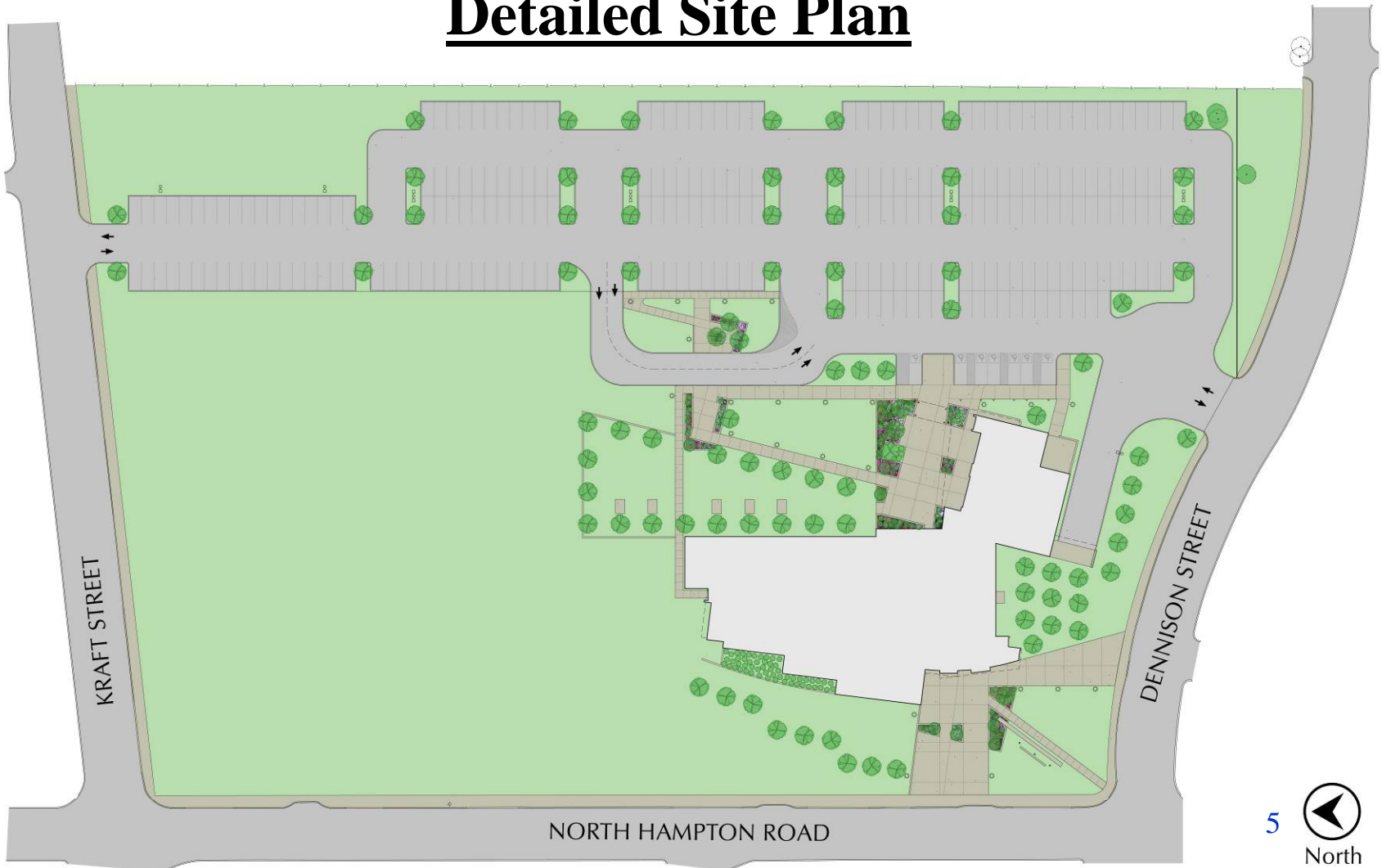




# *El Centro College*

*West Campus*

## Detailed Site Plan





# El Centro College

## West Campus

### First Level

- LOBBY
- LEARNING SUPPORT
- GENERAL USE
- ACADEMIC
- ADMINISTRATIVE / SUPPORT
- STUDENT SERVICES
- STAFF & FACULTY COMMON USE
- CLASSROOMS
- TESTING
- CIRCULATION
- BUILDING SUPPORT





# El Centro College

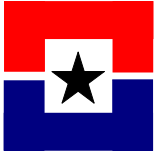
## West Campus

### Second Level

- LOBBY
- LEARNING SUPPORT
- GENERAL USE
- ACADEMIC
- ADMINISTRATIVE / SUPPORT
- STUDENT SERVICES
- STAFF & FACULTY COMMON USE
- CLASSROOMS
- TESTING
- CIRCULATION
- BUILDING SUPPORT







# *El Centro College*

*West Campus*

## View from Hampton







# *El Centro College*

*West Campus*

## View from Parking Lot





# *El Centro College*

*West Campus*

---

- Construction Start Date: January 2008
- Construction Completion Date: January 2009
- Construction Budget \$7,152,000
- Square Footage: 33,800 GSF
- Cost Per Square Foot: \$212



## **Remodeling / Infrastructure**

- Construction Budget \$745,000
- Project Scope Not Yet Defined
- Construction Completion Date: N/A



# *2004 Bond Program*

---



## Richland College

---

Richland Collegiate High School of Mathematics, Science, and Engineering  
DALLAS COUNTY COMMUNITY COLLEGE DISTRICT





# Richland College

## Campus Map

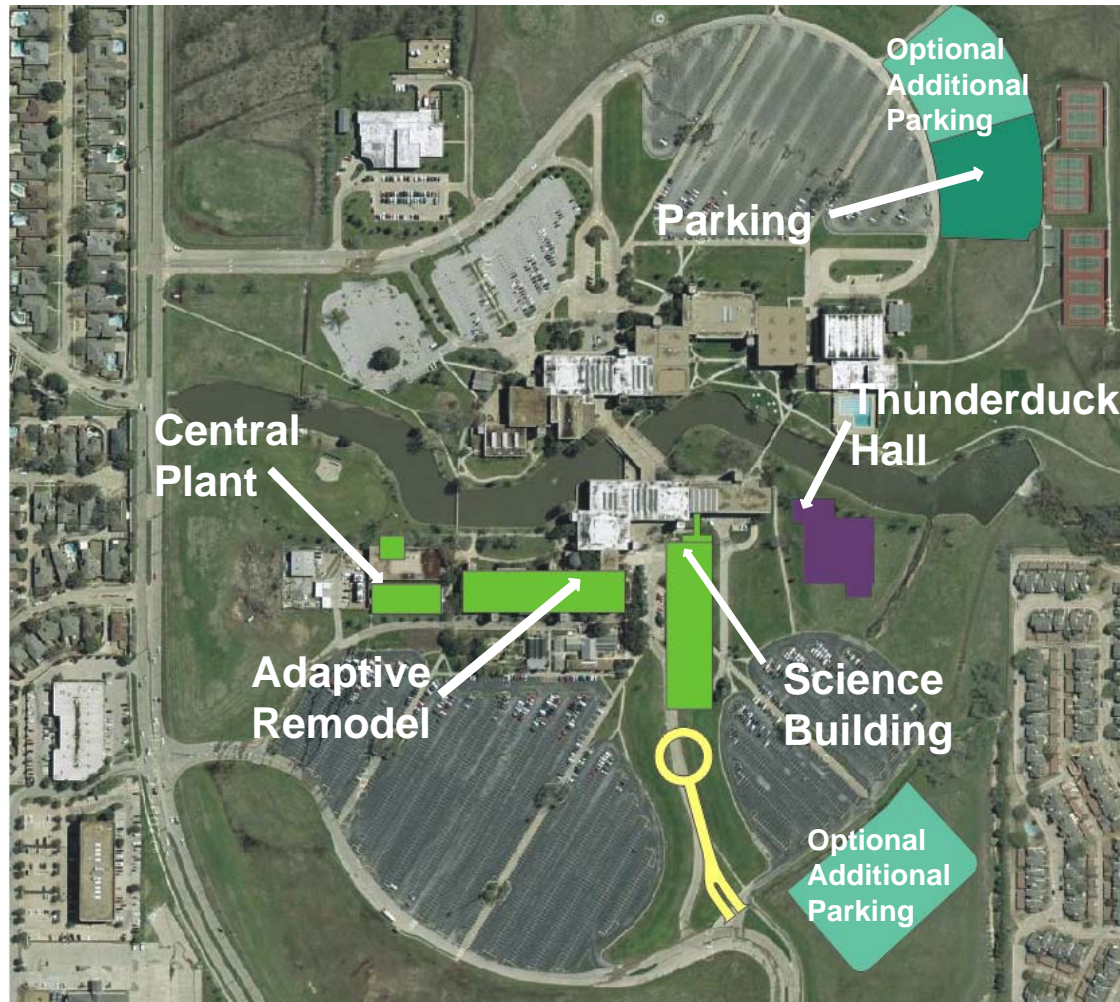






# *Richland College*

## Aerial View

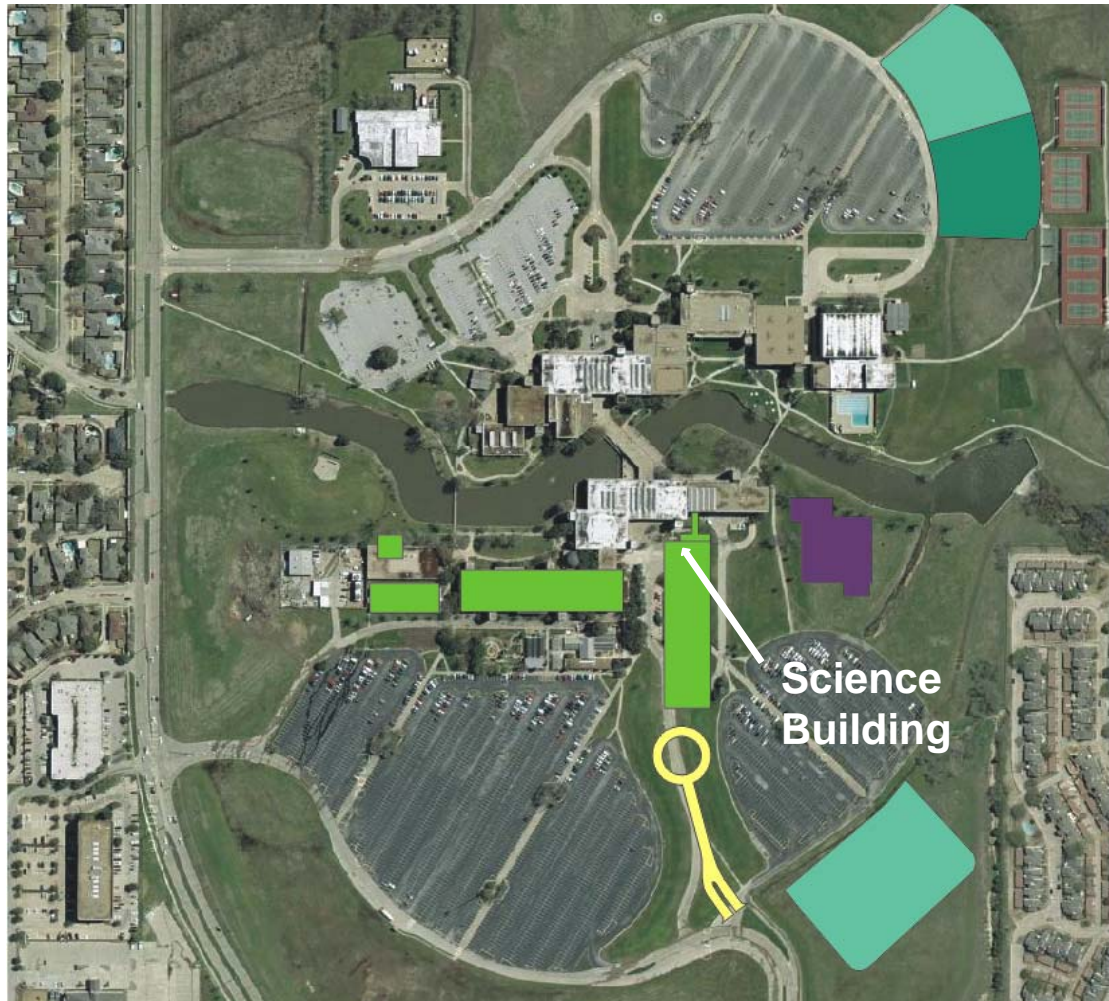






# *Richland College*

## Aerial View





# *Richland College*

## **Science Building New Building**

- Biology Labs
- Chemistry Labs
- Physics Labs
- Geology Lab
- Computer Lab
- Prep Storage Areas
- Science Corner
- Study Room
- Conference Rooms
- LEED® Platinum\* Certified Facility
- Exterior Geology Teaching Area
- Division Work Room
- Division Offices
- Faculty/Instructional Staff Offices
- Bookstore/Coffee Bar
- Atrium Student Lounge
- Media Storage Closets
- Custodial Storage Closets
- Wiring Closets

\*Platinum level reached by current evaluation of building & site characteristics, certification pending.



## **LEED® Platinum\* Certified Facility**

- Projected operational savings in excess of \$300,000 per year at current utility prices
- Healthy environment for optimal learning and working
- Sustainable architecture for teaching environmental sciences by example
- 90% of occupied spaces in the facility have exterior views
- 83% of those occupied spaces receive enough natural light from those views, that under normal daytime hours, electric lighting may not be required







# Richland College

## Science Building

### Enlarged Site Plan

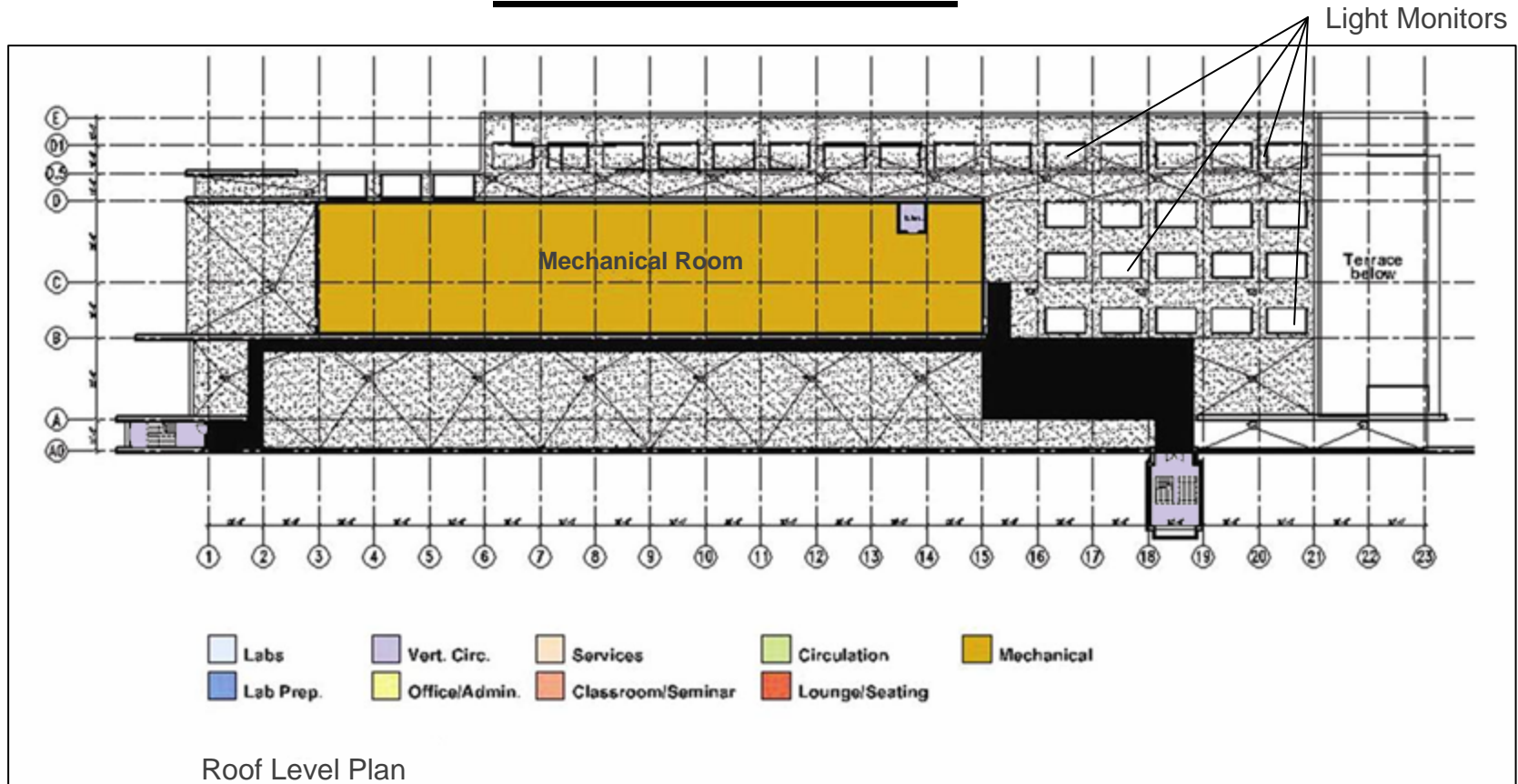




# Richland College

## Science Building

### Roof Level Plan







# Richland College

## Science Building

### Second Level Plan



SECOND FLOOR PLAN



# Richland College

## Science Building

### First Level Plan



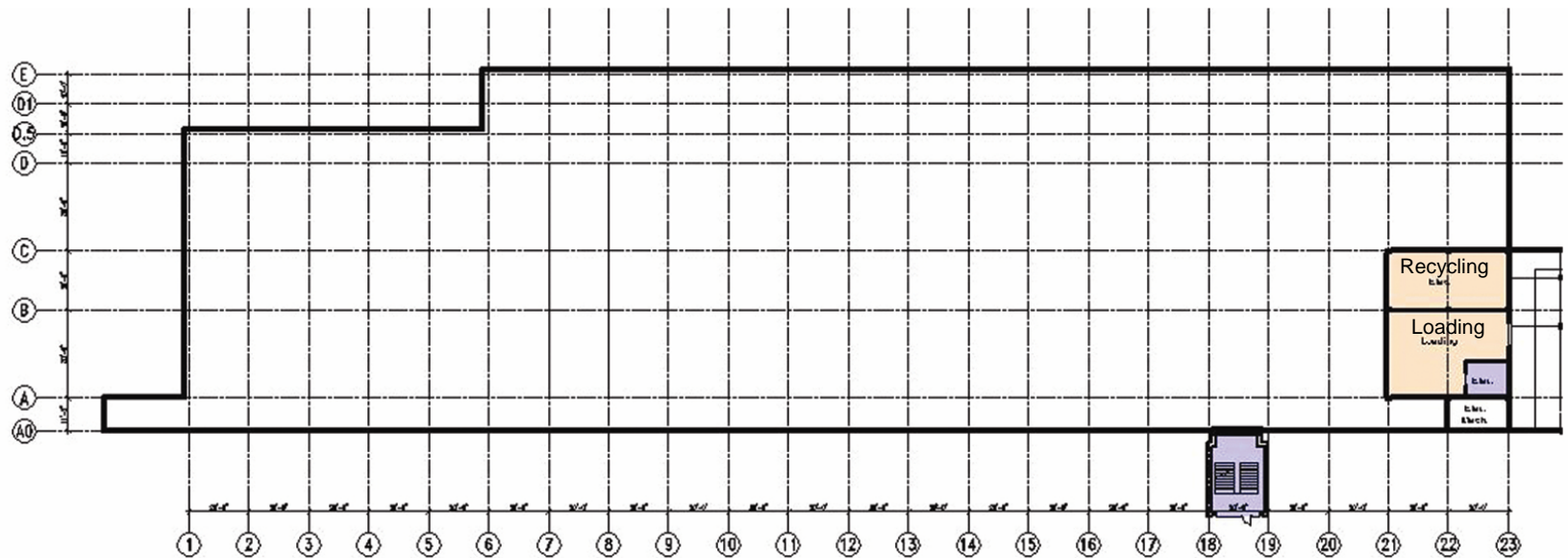
FIRST FLOOR PLAN



# Richland College

## Science Building

### Basement Level Plan



- |           |               |                   |                |            |
|-----------|---------------|-------------------|----------------|------------|
| Labs      | Vert. Circ.   | Services          | Circulation    | Mechanical |
| Lab Prep. | Office/Admin. | Classroom/Seminar | Lounge/Seating |            |

BASEMENT FLOOR PLAN

# *Richland College*

*Science Building*



---

## View from South





# *Richland College*

## *Science Building*



### View from Southwest





# *Richland College*

## *Science Building*

### **Elevated View from West**







# *Richland College*

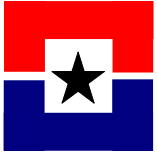
## *Science Building*

### View from Northwest



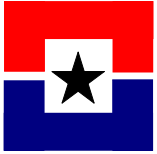
# *Richland College*

## *Science Building*



## View from North





# *Richland College*

## *Science Building*

### **View from Northeast**



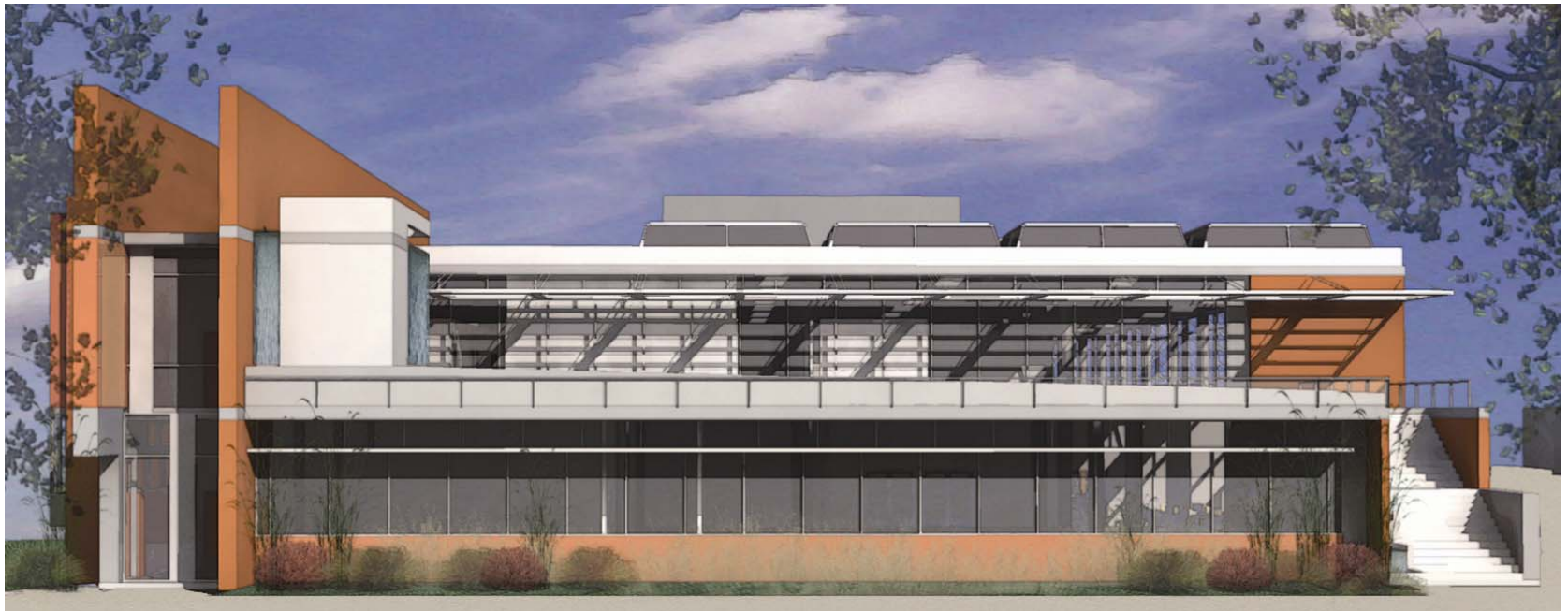


# *Richland College*

## *Science Building*



### View from East



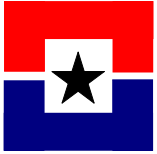


# *Richland College*

## *Science Building*

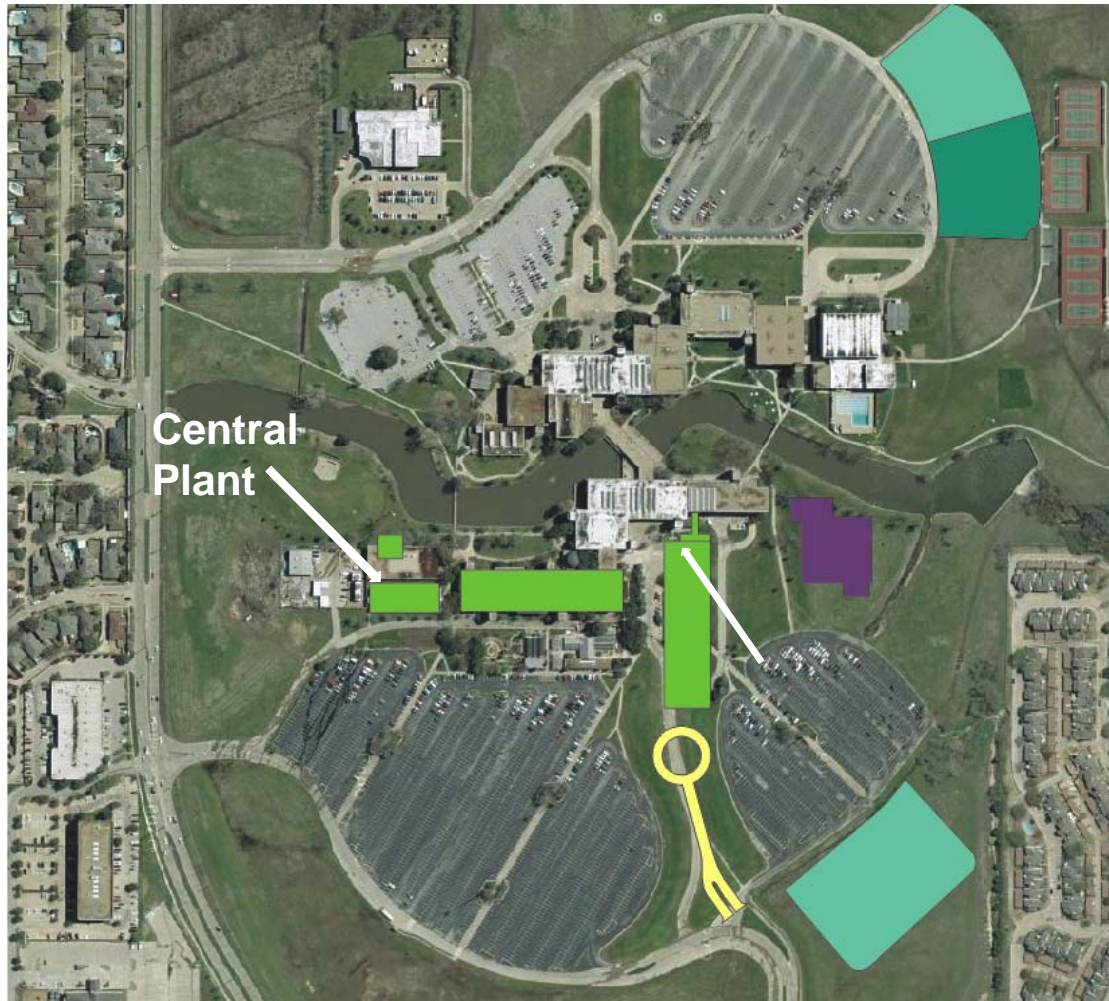
### **Elevated View from South East**





# *Richland College*

## Aerial View



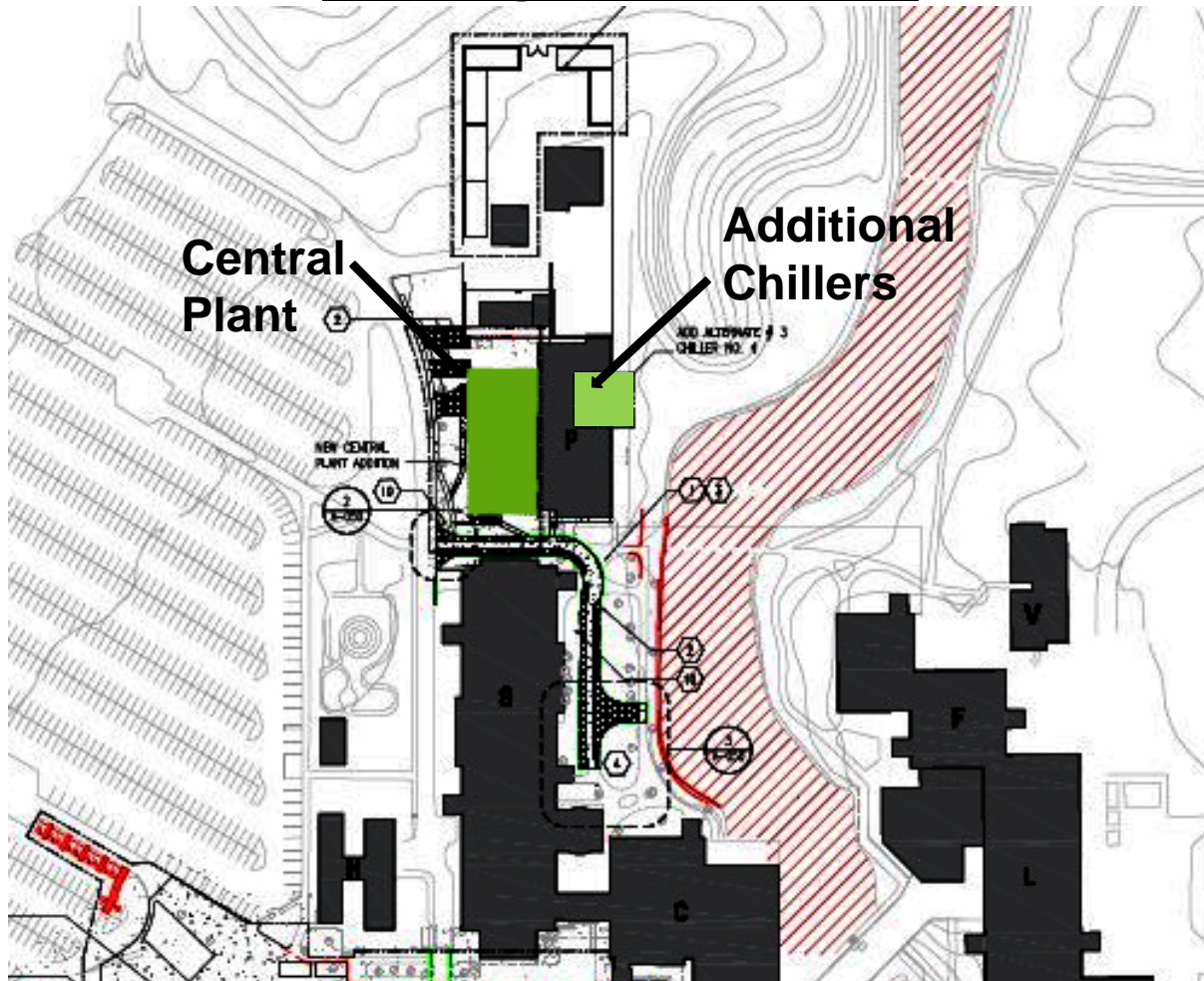




# Richland College

## Science Building– Central Plant Expansion

### Enlarged Site Plan





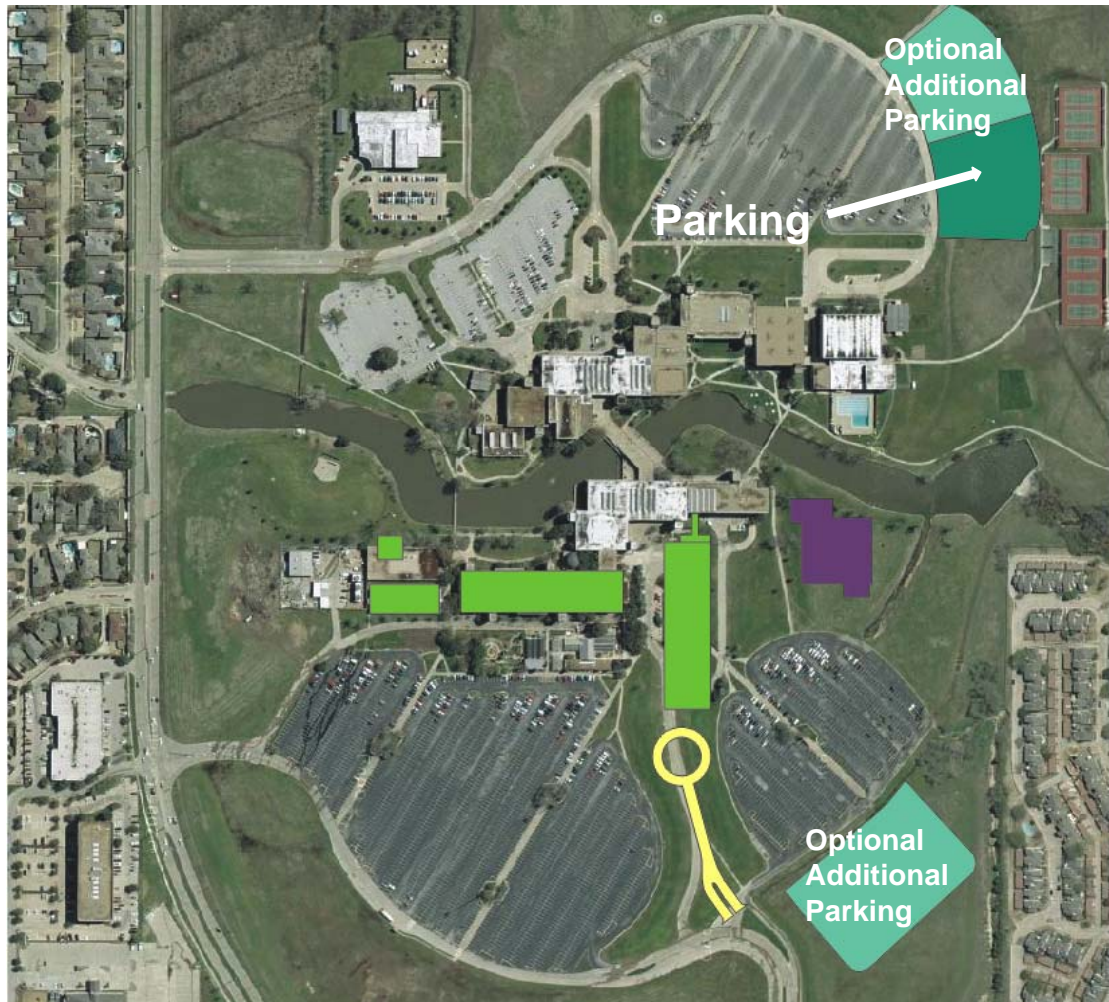
## **Central Plant**

- Shell Space for Facilities Services Offices
- Conversion of Existing Washita Building to Additional Warehouse Space
- New Boiler Plant
- Expansion of Existing Chiller Plant
  - Increasing Efficiency
  - Serving the New Science Building
  - Allowing for Future Growth



# *Richland College*

## Aerial View



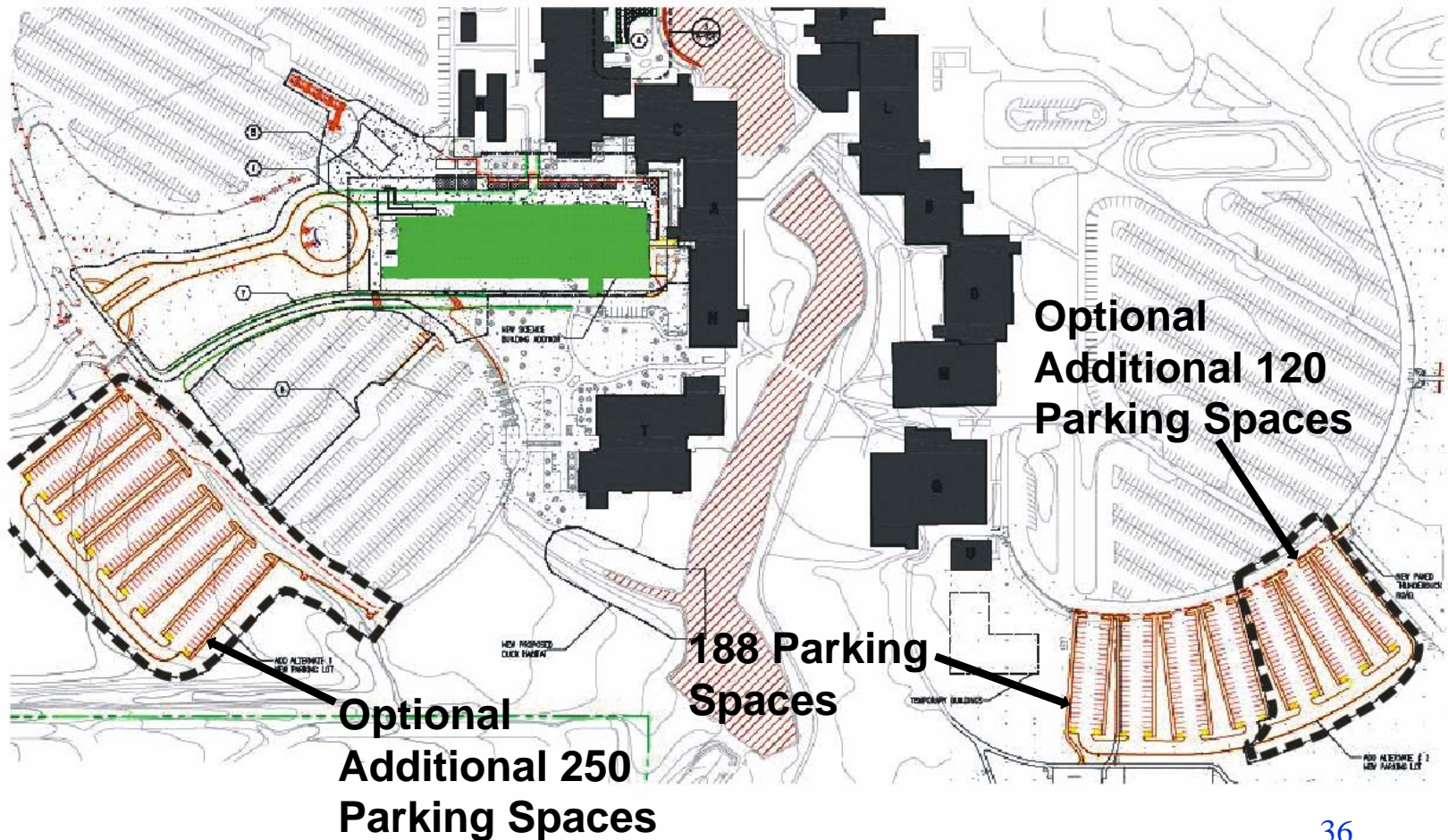




# Richland College

## Science Building– Parking

### Enlarged Site Plan





---

## Parking

- 188 Spaces North of Tennis Courts
- Optional Parking
  - Budget and Market Conditions Permitting
  - 250 Spaces West of Thunderduck Hall
  - 120 Spaces North of Tennis Courts





- **Construction Start Date: October 2007**
- **Construction Completion Date: July 2009**
- **Science Building**
  - Gross Square Footage: 118,700 @ \$295 per S.F.
  - Construction Budget: \$35,000,000 \*
- **Central Plant**
  - Gross Square Footage: 11,300 Total @ \$531 per S.F.
  - Construction Budget: \$6,000,000 \* (Includes Major Mechanical Equipment)
- **Parking**
  - Spaces: 188
  - Construction Budget: \$900,000 \*
  - Optional 370 Spaces (Budget and Market Conditions Pending)
- **Total Project Budget \$41,900,000 \***

\* Pending Board of Trustee approval in September 4, 2007



### ■ **Augmented Budget \*\* Required for:**

- Fire Lane \*
- 4' x 6' RCP Storm Sewer Line \*
- 48" RCP Storm Sewer Line \*
- Asphalt Demolition (Service Drive) \*
- Asphalt Replacement (Service Drive) \*
- Relocation of Waterline (Service Drive) \*
- Secure Current Scope of Work
- Allow Possible Selection of Parking Add Alternates

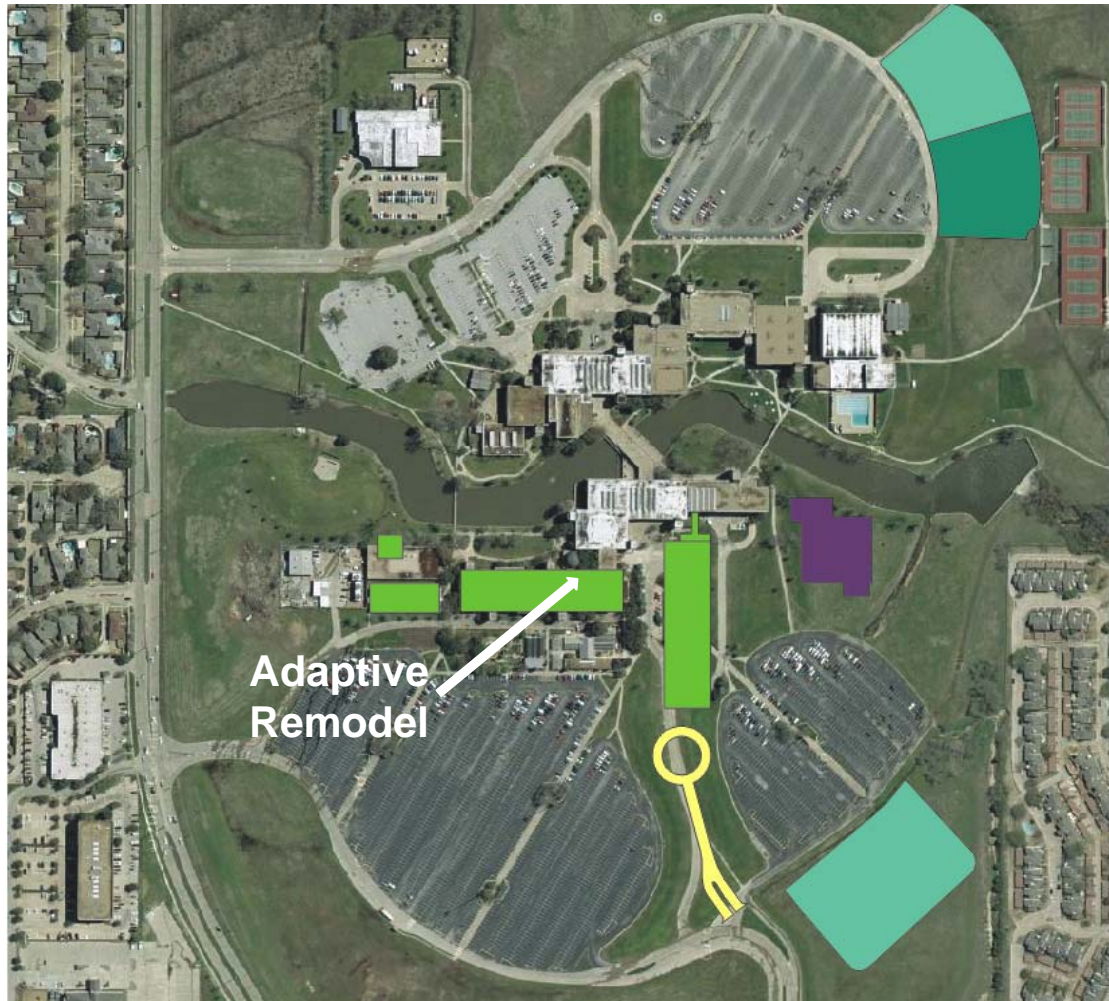
\* *Required by City of Dallas*

\*\* *1.5 Million (Back-up “underwriting” from Richland College fund Balance, as needed)*



# *Richland College*

## Aerial View





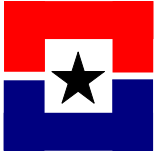
## **Adaptive Remodel of Vacant Space**

- Remodel of Space Vacated in Sabine Hall
- Additional Classroom Space for Science and Health Professions
- Photography / Multimedia Lab
- Capstone Commons
- Related Minor Ad Hoc Remodels in Neches, Medina, and El Paso



# *Richland College*

## *Adaptive Remodel of Vacant Space - Budget*



- Construction Start Date: July 2009
- Construction Completion Date: February 2010
- Gross Square Footage: 25,000 (estimated) @ \$127.50 per S.F
- Construction Budget: \$3,187,525



---

The End